





HELLO!

**WELCOME TO THE
BARPA WORLD**

barpa

Hello! Welcome to our world. Have you heard about us? We are specialized in structured cabling systems for data networks. We are able to give you the full range, from cable to cabinets, fiber optic to copper. As you may know, the world is always changing and that's why we have a very dynamic team, which is ready to give you the support you need. We are Fearless and Adventurous!!

Values

Our big values are Proximity, Innovation and Quality. The customer is our focus, so we value the Proximity. We always want to be with you, give you our best support, technical trainings, open information and so on. Never forget this, if you need anything from us, please contact. Innovation and Quality, not only in the products, but also in the marketing materials. You can check this in our Website.

Website & Social Network

Our website (www.barpa.eu) has all the information you need to check the quality of our products. You can see our update news and other content from the barpa world.

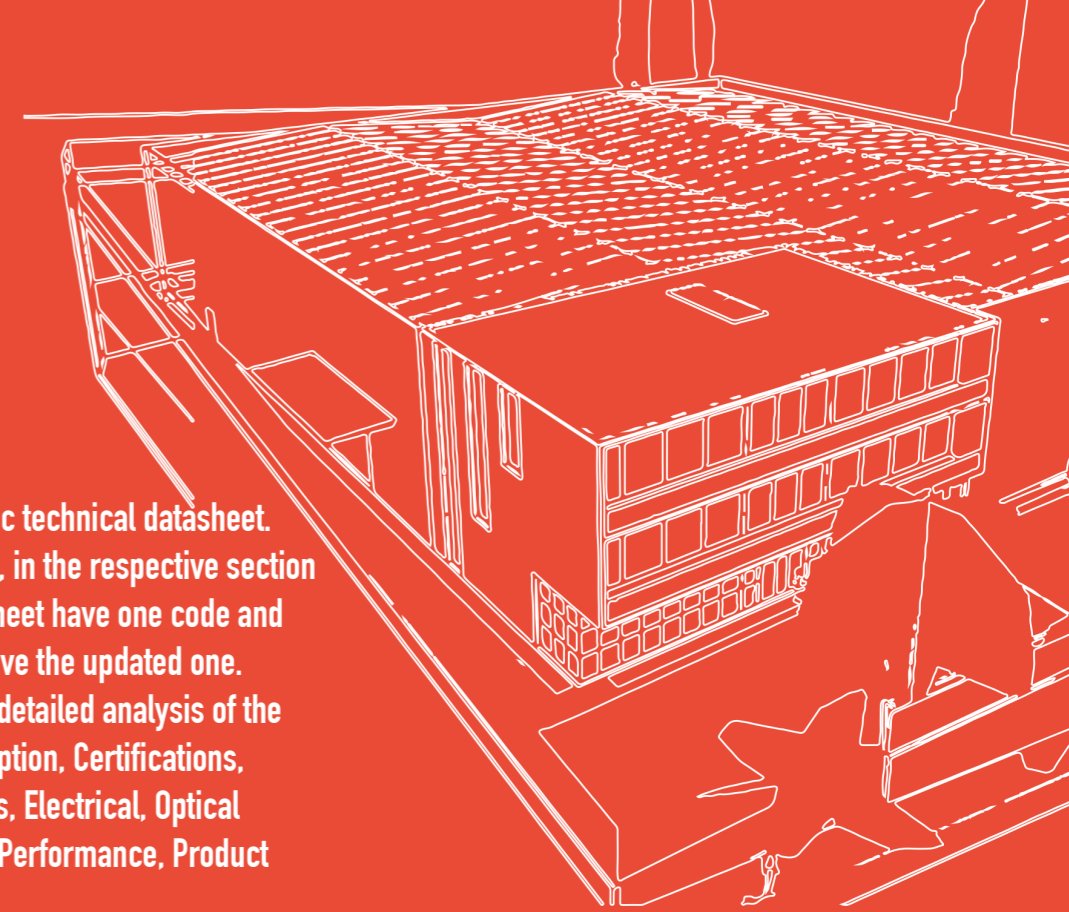
As we want to be always near you, we'll have strong contact with social networks, like LinkedIn, Facebook, Instagram and Twitter. In this way you can see us wherever you are.

Datasheets

Each barpa product has a specific technical datasheet. You can find them in our website, in the respective section of the product. All product datasheet have one code and revision code, to inform if you have the updated one. Each datasheet contains a more detailed analysis of the product, such as: Product description, Certifications, Product images, Product features, Electrical, Optical and Mechanical characteristics, Performance, Product specifications and Packaging.

25 Years Warranty

As part of your goal to achieve quality excellence, barpa gives you a 25 year warranty for products and applications. This warranty covers the network infrastructure installations, like optical fiber or copper. This is only available when systems are designed, installed and tested by an approved barpa partner with current training certification in place. The warranty is applicable to all barpa solution and starts at the date of the invoicing. The products must furthermore be certified for compliance to standards specified by barpa. The warranty is granted to the entity which is specified on the warranty certificate. This certificate will be registered in the system and will remain there until the end of the warranty. For more information, please contact us. barpa is a partner you can trust, a partner to the future.



ICON DESCRIPTION

This icon description is one help for your analysis of the catalog. We wish you a good experience with us:

	Outdoor Application		Comply With the European Standards
	Indoor Application		Comply With the Environmental Standards
	Conduit Application		Made With PE Material
	Cable Tray Application		Made With PVC Material
	Underground Application		With Incorporated Cable Bundle
	Aerial Application		With Different Plug Types
	Flame Retardant		Aluminum
	Product Belongs to System 25 Years Warranty		USB Incorporated
	Low Smoke Zero Halogen		PS/2 Incorporated

INDEX

FIBER OPTIC

CABLE	09
PATCH CORD	17
PIGTAIL	23
ADAPTER	30
PATCH PANEL	33
BOX	36
ACCESSORY	38

COPPER

CABLE	42
PATCH CORD	56
KEYSTONE JACK RJ45	60
PATCH PANEL	64

RACKS

CETUS	72
NORMA	74
CRUX	78
PYXIS	81
KVM	82
PDU	83
ACCESSORY	84

FIBER OPTIC

With barpa fiber optic you can find the complete solution to your network system. Tight Buffer cables are perfect to make backbone connections and patch cords. The solution of loose tube cables are very complete, for less to high demanding environments. To use with the cables, you have the full range of patch cords, pigtails and adapters. barpa also has good houses to secure all the optic system, patch panel and boxes.

01 CABLE

02 PATCH CORD

03 PIGTAIL

04 ADAPTER

05 PATCH PANEL

06 BOX

06 ACCESSORY



FIBER OPTIC GENERAL SPECIFICATIONS

The tables below describe all the technical specifications for barpa fiber. Complies the standards ISO11801 and EN50173-1. If you have any special request for fiber please contact our team, we are glad to find a solution for your needs.

MONOMODE

Optical performance	Conditions (nm)	G652D	G657A2	G657B3
Attenuation (dB/km)	1310	≤ 0.34	≤ 0.35	
	1383	≤ 0.34	≤ 0.35	
	1550	≤ 0.20	≤ 0.22	≤ 0.21
	1625	≤ 0.24	≤ 0.23	
Dispersion Coefficient	1285 to 1340	-	≤ 3.50	
	1550	≤ 18.00		
Mode Field Diameter (μm)	1310	9.20 ± 0.40	8.80 ± 0.40	8.40 to 9.30 ± 0.40
	1550	10.40 ± 0.50	8.80 ± 0.50	9.30 to 10.30 ± 0.50
Effective Group Index of Refractive	1310	1.4683	1.466	1.468
	1550	1.4688	1.467	1.469
Geometrical Data				
Cladding Diameter (μm)	-	124.80 ± 0.70	125.00 ± 0.70	
Coating Diameter (μm)	-	245.00 ± 5.00		
Coating / Cladding Concentricity error (μm)	-	≤ 12.00		
Core / Cladding Concentricity error (μm)	-	≤ 0.50		

MULTIMODE

Optical Performance	Conditions (nm)	OM2	OM3	OM4
Attenuation (dB/km)	850	≤ 2.20 - ≤ 2.40	≤ 2.40	≤ 2.20 - ≤ 2.40
	-	≤ 0.60 - ≤ 0.70	≤ 0.70	≤ 0.60
Bandwidth (MHz.km)	850	≥ 400.00 - ≥ 750.00	≥ 750.00	≥ 3500.00
	1300	≥ 500.00 - ≥ 1200.00	≥ 500.00	
Numerical Aperture	-	0.20 ± 0.02		
Effective Group Index of Refractive	850	1.483		
	1300	1.478		
Geometrical Data				
Core Diameter (μm)	-	50.00 ± 2.50		
Cladding Diameter (μm)	-	125.00 ± 1.00		
Overall Coating Diameter (μm)	-	247.00 ± 7.00		
Coating / Cladding Concentricity Error (μm)	-	≤ 10.00		
Core / Cladding Concentricity Error (μm)	-	≤ 1.00	≤ 1.50	≤ 1.00

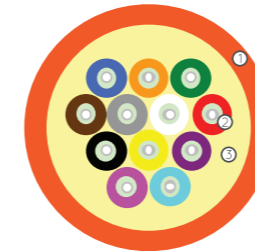
FIBER OPTIC TIGHT BUFFER CABLE

DISTRIBUTION CABLE



DESCRIPTION

The barpa Distribution Cables are perfect for building backbone and horizontal distribution applications. With a coating diameter of 900μm this cable is used in structured cabling installations: data centers, LANs, SANs and longer length backbones.



- ① Outer Jacket;
- ② Tight-buffer;
- ③ Strength Member.



Applicable Standards

- ISO/IEC 11801; • EN 50173-1; • EN50575; • IEC 60794-2; • IEC 60332-1-[1,2];
- IEC 60754-[1,2]; • IEC 61034-[1,2]; • ANSI/TIA-568-C; • IEC 60793;
- ITU G651.1; • ITU G652; • ITU G657.

• SPECIFICATIONS

	Number of Fibers								
	2	4	6	8	12	16	24	48	96
Cable Diameter (mm)	3.5	4.8	5.2	5.5	6.2	7.2	8.5	10.5	23.5
Nominal Cable Weight (kg/km)	6.5	17.0	21.0	23.0	31.5	44.5	59.0	109.0	595.0

• ORDER INFORMATION - CODE

	Number of Fibers								
	2	4	6	8	12	16	24	48	96
OM2	81113101402	81113101404	81113101406	81113101408	81113101412	81113101416	81113101424	81113101448	81113101496
OM3	81114101502	81114101504	81114101506	81114101508	81114101512	81114101516	81114101524	81114101548	81114101596
OM4	81115101602	81115101604	81115101606	81115101608	81115101612	81115101616	81115101624	81115101648	81115101696
OS2 G652D	81112101102	81112101104	81112101106	81112101108	81112101112	81112101116	81112101124	81112101148	81112101196
OS2 G657A2	81112101202	81112101204	81112101206	81112101208	81112101212	81112101216	81112101224	81112101248	81112101296

NOTE: Reels of 2km. Non standards colors, lengths & configurations available on request.

Available in different CPR classes. Please specify when request.

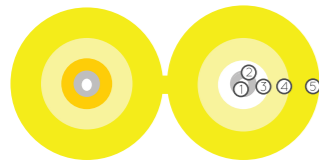
FIBER OPTIC TIGHT BUFFER CABLE

ZIP-CORD



DESCRIPTION

barpa Zip-Cord Cable is a type of simplex/duplex fiber optic cable. It has been designed to offer mechanical durability and to be flame retardant. It can be singlemode or multimode and used with various kinds of connectors. With a coating diameter of 900µm this cable is commonly used in the manufacture of patch cords, to interconnecting fiber optic equipment.



- ① Optical Fiber;
- ② Coating Fiber;
- ③ Tight-buffer;
- ④ Streight Member;
- ⑤ Outer Jacket.



Applicable Standards

- ISO/IEC 11801; • EN 50173-1; • EN50575; • IEC 60794-2; • IEC 60332-1-[1,2];
- IEC 60754-[1,2]; • IEC 61034-[1,2]; • ANSI/TIA-568-C; • IEC 60793;
- ITU G651.1; • ITU G652; • ITU G657.

• SPECIFICATIONS	Cable Diameter 2 mm		Cable Diameter 3 mm	
	Number of Fibers			
	1	2	1	2
Nominal Cable Weight (kg/km)	3.5	7.0	3.5	7.0

• ORDER INFORMATION - CODE							
Cable Diameter (mm)	Number of Fibers	OM2	OM3	OM4	OS2 G652D	OS2 G657A2	OS2 G657B3
2	1	81113102401	81114102501	81115102601	81112102101	81112102201	81112102301
	2	81113102402	81114102502	81115102602	81112102102	81112102202	81112102302
3	1	81113103401	81114103501	81115103601	81112103101	81112103201	81112103301
	2	81113103402	81114103502	81115103602	81112103102	81112103202	81112103302

NOTE: Reels of 2km. Non standards colors, lengths & configurations available on request.

Available in different CPR classes. Please specify when request.

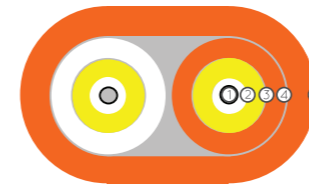
FIBER OPTIC TIGHT BUFFER CABLE

DOUBLE JACKET ZIP-CORD



DESCRIPTION

barpa Double Jacket Zip-Cord Cable is a type of duplex fiber optic cable. It has been designed to offer mechanical durability and to be flame retardant. It can be singlemode or multimode and used with various kinds of connectors. With a coating diameter of 900µm this cable is commonly used in structured cabling installations like data centers, LANs, SANs and longer length backbones.



- ① Optical Fiber;
- ② Coating Fiber;
- ③ Tight-buffer;
- ④ Streight Member;
- ⑤ Outer Jacket.



Applicable Standards

- ISO/IEC 11801; • EN 50173-1; • EN50575; • IEC 60794-2; • IEC 60332-1-[1,2];
- IEC 60754-[1,2]; • IEC 61034-[1,2]; • ANSI/TIA-568-C; • IEC 60793;
- ITU G651.1; • ITU G652; • ITU G657.

• SPECIFICATIONS	Number of Fibers
	2
Nominal Cable Weight (kg/km)	5,0 ± 0,2 ± 3,0 ± 0,2
Cable Diameter (mm)	2

• ORDER INFORMATION - CODE					
Number of Fibers	OM2	OM3	OM4	OS2 G652D	OS2 G657A2
2	81113104402	81114104502	81115104602	81112104102	81112104202

NOTE: Reels of 2km. Non standards colors, lengths & configurations available on request.

Available in different CPR classes. Please specify when request.

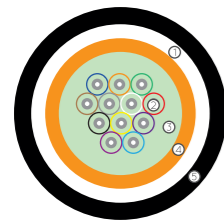
FIBER OPTIC LOOSE TUBE CABLE

UNITUBE CABLE
WITH GLASS YARNS



DESCRIPTION

The barpa Unitube Cable has been designed for demanding solutions. With a range up to 24 fibers and with a sheath outside of 250µm, normally used in backbone of buildings and campus where a lower load voltage is necessary.



- ① Strength Member;
- ② Colored Coating Fiber;
- ③ Filling Gel;
- ④ Loose Tube;
- ⑤ Outer Jacket.



Applicable Standards

- ISO/IEC 11801; • EN 50173-1; • EN50575; • IEC 60794-2; • IEC 60332-1-[1,2];
- IEC 60754-[1,2]; • IEC 61034-[1,2]; • ANSI/TIA-568-C; • IEC 60793;
- ITU G651.1; • ITU G652; • ITU G657.

• SPECIFICATIONS

	Number of Fibers						
	2	4	6	8	12	16	24
Cable Diameter (mm)	5.8 ± 0.2				6.6 ± 0.2		
Nominal Cable Weight (kg/km)	37				50		

• ORDER INFORMATION - CODE

	Number of Fibers						
	2	4	6	8	12	16	24
OM2	81111211402	81111211404	81111211406	81111211408	81111211412	81111211416	81111211424
OM3	81111211502	81111211504	81111211506	81111211508	81111211512	81111211516	81111211524
OM4	81111211602	81111211604	81111211606	81111211608	81111211612	81111211616	81111211624
OS2 G652D	81111211102	81111211104	81111211106	81111211108	81111211112	81111211116	81111211124
OS2 G657A2	81111211202	81111211204	81111211206	81111211208	81111211212	81111211216	81111211224

NOTE: Reels of 2km. Non standards colors, lengths & configurations available on request.
Available in different CPR classes. Please specify when request.

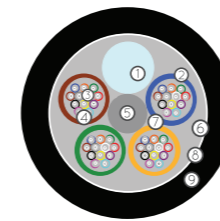
FIBER OPTIC LOOSE TUBE CABLE

MULTITUBE CABLE
WITH GLASS YARNS



DESCRIPTION

barpa Multitube Cable has been designed to offer a robust solution. Offering up to 96 fibers and with a coating diameter of 250µm it is mostly used in building and campus backbone applications where a higher load tension is required, offering compact low fiber count duct grade cable.



- ① Filler;
- ② Loose Tube;
- ③ Colored Coating Fiber;
- ④ Filling Gel;
- ⑤ Central Strength Member;
- ⑥ Waterproof Tape;
- ⑦ Water-blocking Yarn;
- ⑧ Glass Yarns;
- ⑨ Outer Jacket.



Applicable Standards

- ISO/IEC 11801; • EN 50173-1; • EN50575; • IEC 60794-2; • IEC 60332-1-[1,2];
- IEC 60754-[1,2]; • IEC 61034-[1,2]; • ANSI/TIA-568-C; • IEC 60793;
- ITU G651.1; • ITU G652; • ITU G657.

• SPECIFICATIONS

	Number of Fibers								
	2	4	6	8	12	16	24	48	96
Cable Diameter (mm)	9.3 ± 0.3						11 ± 0.5		
Nominal Cable Weight (kg/km)	90.0						125		

• ORDER INFORMATION - CODE

	Number of Fibers								
	2	4	6	8	12	16	24	48	96
OM2	81111205402	81111205404	81111205406	81111205408	81111205412	81111205416	81111205424	81111205448	81111205496
OM3	81111205502	81111205504	81111205506	81111205508	81111205512	81111205516	81111205524	81111205548	81111205596
OM4	81111205602	81111205604	81111205606	81111205608	81111205612	81111205616	81111205624	81111205648	81111205696
OS2 G652D	81111205102	81111205104	81111205106	81111205108	81111205112	81111205116	81111205124	81111205148	81111205196
OS2 G657A2	81111205202	81111205204	81111205206	81111205208	81111205212	81111205216	81111205224	81111205248	81111205296

NOTE: Reels of 2km. Non standards colors, lengths & configurations available on request.
Available in different CPR classes. Please specify when request.

FIBER OPTIC LOOSE TUBE CABLE

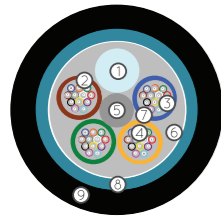
MULTITUBE CABLE WITH CORRUGATED STEEL



DESCRIPTION

barpa Multitube Cable has been designed to offer a robust solution. Offering up to 144 fibers and with a coating diameter of 250µm it is mostly used in building and campus backbone applications where a higher load tension is required, offering compact low fiber count duct grade cable. Corrugated steel tape armour provides an additional crush resistance to the cable. LSZH or PE jacket available.

- ① Filler;
- ② Loose Tube;
- ③ Filling Gel;
- ④ Colored Coating Fiber;
- ⑤ Central Strength Member;
- ⑥ Waterproof Tape;
- ⑦ Water-blocking Yarn;
- ⑧ Corrugated Steel;
- ⑨ Outer Jacket.



Applicable Standards

- ISO/IEC 11801; • EN 50173-1; • EN 50575; • IEC 60794-2; • IEC 60332-1-[1,2];
- IEC 60754-[1,2]; • IEC 61034-[1,2]; • ANSI/TIA-568-C; • IEC 60793;
- ITU G651.1; • ITU G652; • ITU G657.

SPECIFICATIONS

	Number of Fibers										
	2	4	8	12	24	36	48	60	72	96	144
Cable Diameter (mm)	10.0 ± 0.3						12.5 ± 0.5			15 ± 0.5	
Nominal Cable Weight (kg/km)	132						205			247	

PART NUMBER BREAKDOWN - ORDER INFORMATION

8 1 1 1 1 2 0 6 C F F

CATEGORY	OS2 G652D					OS2 G657A2		OM2		OM3		OM4	
	C	1	2	4	5	6							
NUMBER OF FIBERS	2	4	8	12	24	36	48	60	72	96	144		
FF	02	04	08	12	24	36	48	60	72	96	144		

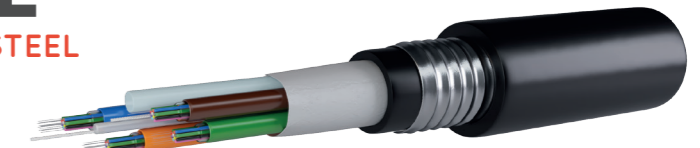
PE For PE Cables use 81121206 + Category + Number of fibers.

NOTE: Reels of 2km (144F is 1km). Non standards colors, lengths & configurations available on request.

Available in different CPR classes. Please specify when request.

FIBER OPTIC LOOSE TUBE CABLE

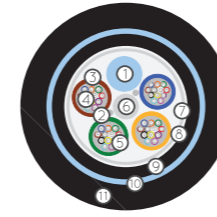
MULTITUBE CABLE WITH CORRUGATED STEEL DOUBLE JACKET



DESCRIPTION

barpa Multitube Cable with Corrugated Steel Double Jacket Sheath has been designed to offer a compact and flexible construction with a coating diameter of 250µm. Offering up to 144 fibers, it is mostly used for direct burial applications. Corrugated steel tape armour provides an additional crush resistance to the cable.

- ① Filler;
- ② Water-blocking Yarn;
- ③ Loose Tube;
- ④ Colored Coating Fiber;
- ⑤ Filling Gel;
- ⑥ Central Strength Member;
- ⑦ Waterproof Tape;
- ⑧ Binding Yarn;
- ⑨ Inner Jacket;
- ⑩ Corrugated Steel;
- ⑪ Outer Jacket.



Applicable Standards

- ISO/IEC 11801; • IEC 60794-3; • EN 50173-1; • EN 50575;
- ANSI/TIA-568-C; • IEC 60793; • ITU G651.1; • ITU G652; • ITU G657.

SPECIFICATIONS

	Number of Fibers										
	2	4	8	12	24	36	48	60	72	96	144
Cable Diameter (mm)	12.3 ± 0.5						14 ± 0.5			17.5 ± 0.5	
Nominal Cable Weight (kg/km)	153						198			297	

PART NUMBER BREAKDOWN - ORDER INFORMATION

8 1 1 2 1 2 0 7 C F F

CATEGORY	OS2 G652D					OS2 G657A2		OM2		OM3		OM4	
	C	1	2	4	5	6							
NUMBER OF FIBERS	2	4	8	12	24	36	48	60	72	96	144		
FF	02	04	08	12	24	36	48	60	72	96	144		

NOTE: Reels of 2km (144F is 1km). Non standards colors, lengths & configurations available on request.

FIBER OPTIC LOOSE TUBE CABLE

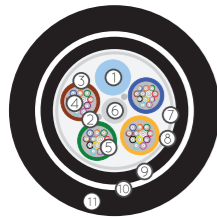
MULTITUBE CABLE WITH GLASS YARN
DOUBLE JACKET



DESCRIPTION

barpa Multitube Cable With Glass Yarn Double Sheath has been designed to offer a compact and flexible construction with a coating diameter of 250µm. Offering up to 144 fibers, it is mostly used for applications where protection from rodent attack are required. Glass yarn armoring provides an additional crush resistance to the cable.

- ① Filler;
- ② Water-blocking Yarn;
- ③ Loose Tube;
- ④ Colored Coating Fiber;
- ⑤ Filling Gel;
- ⑥ Central Strength Member;
- ⑦ Waterproof Tape;
- ⑧ Binding Yarn;
- ⑨ Inner Jacket;
- ⑩ Strength Member;
- ⑪ Outer Jacket.



Applicable Standards

- ISO/IEC 11801; • IEC 60794-3; • EN 50173-1; • EN 50575; ANSI/TIA-568-C;
- IEC 60793; • ITU G651.1; • ITU G652; • ITU G657.

• SPECIFICATIONS

	Number of Fibers										
	2	4	8	12	24	36	48	60	72	96	144
Cable Diameter (mm)	11.5 ± 0.5									13.5 ± 0.5	16.8 ± 0.5
Nominal Cable Weight (kg/km)	116									167	251

• PART NUMBER BREAKDOWN - ORDER INFORMATION

8 1 1 2 1 2 0 8 **C** **F** **F**

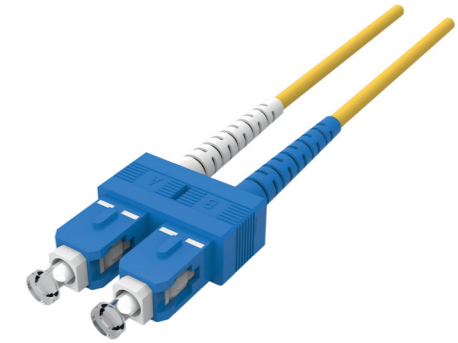
CATEGORY	OS2 G652D	OS2 G657A2	OM2	OM3	OM4
C	1	2	4	5	6

NUMBER OF FIBERS	2	4	8	12	24	36	48	60	72	96	144
F F	0 2	0 4	0 8	1 2	2 4	3 6	4 8	6 0	7 2	9 6	1 4 4

NOTE: Reels of 2km (144F is 1km). Non standards colors, lengths & configurations available on request.

FIBER OPTIC PATCH CORD

OS2 G652D



DESCRIPTION

barpa Singlemode Duplex Patch Cords are manufactured for indoor applications. Produced from the highest quality optical fiber using LSZH cable jacket, terminated with ceramic ferrule connectors assuring a high transmission quality. It is commonly used for interconnecting active equipment and passive optical devices.



Applicable Standards

- ISO/IEC 11801; • EN 50173-1; • IEC 61754-1; • IEC 61753-1; • IEC 61300.

• SPECIFICATIONS

	ST	SC	LC	SC/APC	b2000/APC
Insertion Loss (dB)			< 0.2		
Outer Diameter (mm)			2.00x2		
Outer Sheath Color			Yellow		

• PART NUMBER BREAKDOWN - ORDER INFORMATION

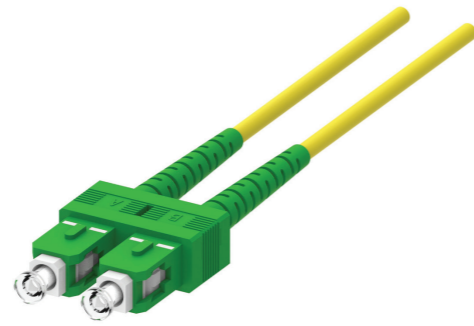
8 1 2 1 2 **A A** **B B** **M M**

1ST CONNECTOR	A A	2ND CONNECTOR	B B	METERS	M M
SC	0 2	SC/APC	0 1	1	0 1
ST	0 3	SC	0 2	2	0 2
LC	0 5	ST	0 3	3	0 3
b2000/APC	0 7	LC	0 5		
		b2000/APC	0 7		

NOTE: Non standards colors, lengths & configurations available on request.

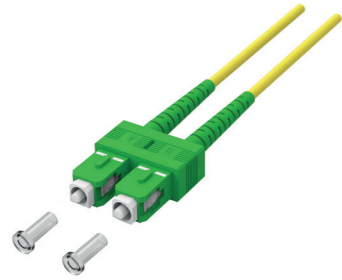
FIBER OPTIC PATCH CORD

OS2 G657A1



DESCRIPTION

barpa Singlemode Duplex Patch Cords are manufactured for indoor applications. Produced from the highest quality optical fiber using LSZH cable jacket, terminated with ceramic ferrule connectors assuring a high transmission quality. It is commonly used for interconnecting active equipment and passive optical devices.



Applicable Standards

• ISO/IEC 11801; • EN 50173-1; • IEC 61754-1; • IEC 61753-1; • IEC 61300.

• SPECIFICATIONS

	SC/APC
Insertion Loss (dB)	< 0.2
Outer Diameter (mm)	2.00x2
Outer Sheath Color	Yellow

• PART NUMBER BREAKDOWN - ORDER INFORMATION

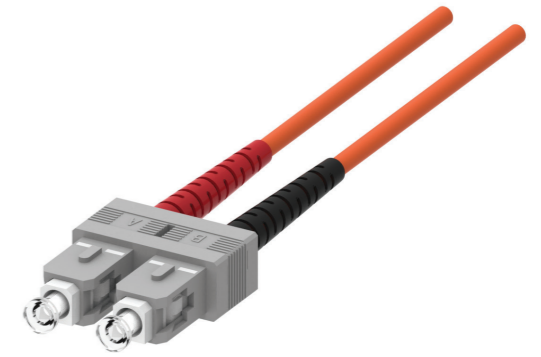
8 1 2 2 2 0 1 0 1 **M M**

METERS	1	2	3	5	10	12	15	20	25	30	40	50
M M	01	02	03	05	10	12	15	20	25	30	40	50

NOTE: Non standards colors, lengths & configurations available on request.

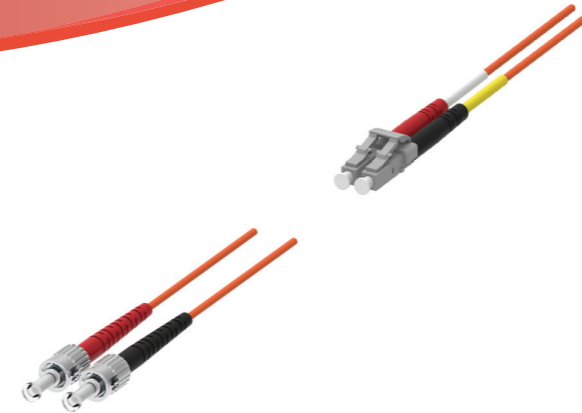
FIBER OPTIC PATCH CORD

OM1 62.5/125



DESCRIPTION

barpa Multimode Duplex Patch Cords are manufactured for indoor applications. Produced from the highest quality optical fiber using LSZH cable jacket, terminated with ceramic ferrule connectors assuring a high transmission quality. It is commonly used for interconnecting optical patch panels and server equipment.



Applicable Standards

• ISO/IEC 11801; • EN 50173-1; • IEC 61754-1; • IEC 61753-1; • IEC 61300.

• SPECIFICATIONS

	ST	SC	LC
Insertion Loss (dB)		< 0.2	
Outer Diameter (mm)		2.00x2	
Outer Sheath Color		Orange	

• PART NUMBER BREAKDOWN - ORDER INFORMATION

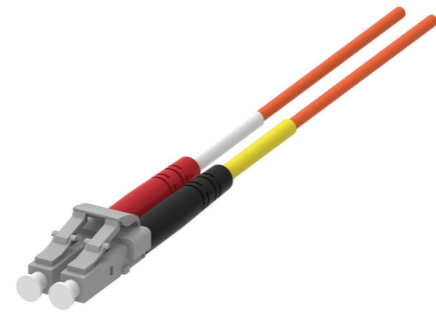
8 1 2 3 2 **A A B B M M**

1ST CONNECTOR	A A	2ND CONNECTOR	B B	METERS	M M
SC	02	SC	02	1	01
ST	03	ST	03	2	02
LC	05	LC	05	3	03

NOTE: Non standards colors, lengths & configurations available on request.

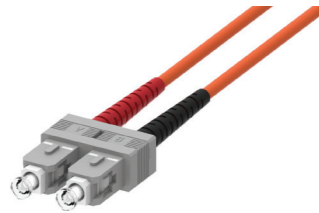
FIBER OPTIC PATCH CORD

OM2 50/125



DESCRIPTION

barpa Multimode Duplex Patch Cords are manufactured for indoor applications. Produced from the highest quality optical fiber using LSZH cable jacket, terminated with ceramic ferrule connectors assuring a high transmission quality. It is commonly used for interconnecting optical patch panels and server equipment.



Applicable Standards

- ISO/IEC 11801; • EN 50173-1; • IEC 61754-1; • IEC 61753-1; • IEC 61300.

SPECIFICATIONS

	ST	SC	LC
Insertion Loss (dB)		< 0.2	
Outer Diameter (mm)		2.00x2	
Outer Sheath Color		Orange	

PART NUMBER BREAKDOWN - ORDER INFORMATION

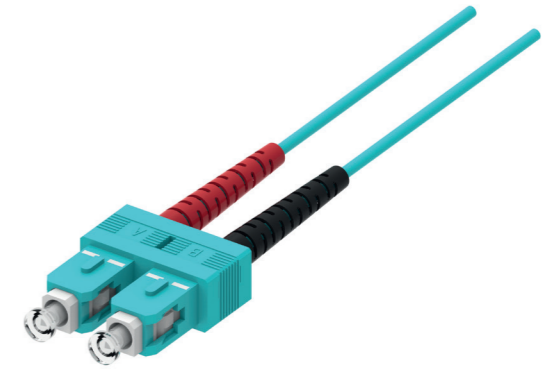
8 1 2 4 2 **A A C C M M**

1ST CONNECTOR	A A	2ND CONNECTOR	C C	METERS	M M
SC	02	SC	02	1	01
ST	03	ST	03	2	02
LC	05	LC	05	3	03

NOTE: Non standards colors, lengths & configurations available on request.

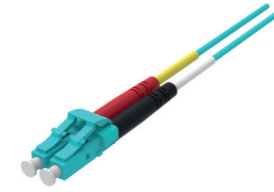
FIBER OPTIC PATCH CORD

OM3 50/125



DESCRIPTION

barpa Multimode Duplex Patch Cords are manufactured for indoor applications. Produced from the highest quality optical fiber using LSZH cable jacket, terminated with ceramic ferrule connectors assuring a high transmission quality. It is commonly used for interconnecting optical patch panels and server equipment.



Applicable Standards

- ISO/IEC 11801; • EN 50173-1; • IEC 61754-1; • IEC 61753-1; • IEC 61300.

SPECIFICATIONS

	ST	SC	LC
Insertion Loss (dB)		< 0.2	
Outer Diameter (mm)		2.00x2	
Outer Sheath Color		Aqua	

PART NUMBER BREAKDOWN - ORDER INFORMATION

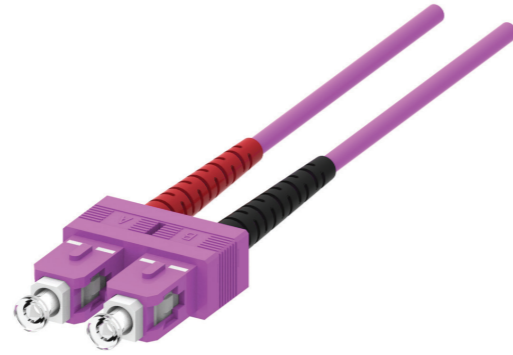
8 1 2 5 2 **A A B B M M**

1ST CONNECTOR	A A	2ND CONNECTOR	B B	METERS	M M
SC	02	SC	02	1	01
ST	03	ST	03	2	02
LC	05	LC	05	3	03

NOTE: Non standards colors, lengths & configurations available on request.

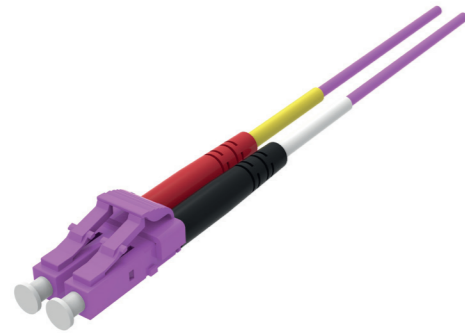
FIBER OPTIC PATCH CORD

OM4 50/125



DESCRIPTION

barpa Multimode Duplex Patch Cords are manufactured for indoor applications. Produced from the highest quality optical fiber using LSZH cable jacket, terminated with ceramic ferrule connectors assuring a high transmission quality. It is commonly used for interconnecting optical patch panels and server equipment.



Applicable Standards

• ISO/IEC 11801; • EN 50173-1; • IEC 61754-1; • IEC 61753-1; • IEC 61300.

SPECIFICATIONS

	SC	LC
Insertion Loss (dB)	< 0.2	
Outer Diameter (mm)	2.00x2	
Outer Sheath Color	Purple	

PART NUMBER BREAKDOWN - ORDER INFORMATION

8 1 2 6 2 **AA** **BB** **MM**

1ST CONNECTOR	AA	2ND CONNECTOR	BB	METERS	MM
SC	02	SC	02	1	01
LC	05	LC	05	2	02
				3	03

NOTE: Non standards colors, lengths & configurations available on request.

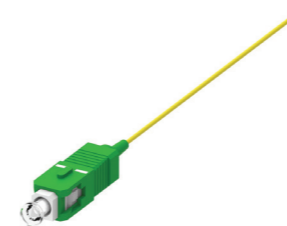
FIBER OPTIC PIGTAIL

OS2 G652D



DESCRIPTION

barpa Singlemode Simplex Fiber Optic Pigtail provides a fast way to make factory terminations in the field, which can easily be fusion or mechanically spliced in a protective case to an existing fiber. Produced from the highest quality optical fiber using LSZH cable jacket, terminated with ceramic ferrule connector assuring a high transmission quality.



Applicable Standards

• ISO/IEC 11801; • EN 50173-1; • IEC 61754-1; • IEC 61753-1; • IEC 61300.

SPECIFICATIONS

	ST	SC	SC/APC	FC	LC/APC	b2000/APC	LC
Insertion Loss (dB)	< 0.2						
Outer Diameter (mm)	0.9						
Outer Sheath Color	Yellow						

ORDER INFORMATION

Code	Description	Conector	Length (m)	Box	
				Dimension (mm)	Quantity (un)
81303101010	Pigtail OS2 G652D ST	ST	1.5	220x220x225	200
81302101010	Pigtail OS2 G652D SC	SC			
81301101010	Pigtail OS2 G652D SC/APC	SC/APC			
81306101010	Pigtail OS2 G652D FC	FC			
81304101010	Pigtail OS2 G652D LC/APC	LC/APC			
81310701010	Pigtail OS2 G652D b2000/APC Simplex	E2000/APC			
81305101010	Pigtail OS2 G652D LC	LC			

NOTE: Non standards colors, lengths & configurations available on request.

FIBER OPTIC PIGTAIL

OS2 G657A2



DESCRIPTION

barpa Singlemode Simplex Fiber Optic Pigtail provides a fast way to make factory terminations in the field, which can easily be fusion or mechanically spliced in a protective case to an existing fiber. Produced from the highest quality optical fiber using LSZH cable jacket, terminated with ceramic ferrule connector assuring a high transmission quality.



Applicable Standards

• ISO/IEC 11801; • EN 50173-1; • IEC 61754-1; • IEC 61753-1; • IEC 61300.



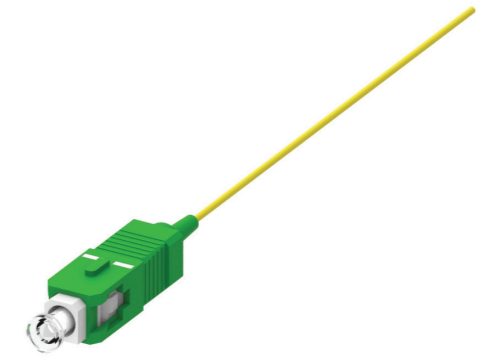
• SPECIFICATIONS						
	ST	SC	SC/APC	FC	LC/APC	LC
Insertion Loss (dB)	< 0.2					
Outer Diameter (mm)	0.9					
Outer Sheath Color	Yellow					

• ORDER INFORMATION					
Code	Description	Conector	Length (m)	Box	
				Dimension (mm)	Quantity (un)
81303102010	Pigtail OS2 G657A2 ST	ST	1.5	220x220x225	200
81302102010	Pigtail OS2 G657A2 SC	SC			
81301102010	Pigtail OS2 G657A2 SC/APC	SC/APC			
81306102010	Pigtail OS2 G657A2 FC	FC			
81304102010	Pigtail OS2 G657A2 LC/APC	LC/APC			
81305102010	Pigtail OS2 G657A2 LC	LC			

NOTE: Non standards colors, lengths & configurations available on request.

FIBER OPTIC PIGTAIL

OS2 G657B3



DESCRIPTION

barpa Singlemode Simplex Fiber Optic Pigtail provides a fast way to make factory terminations in the field, which can easily be fusion or mechanically spliced in a protective case to an existing fiber. Produced from the highest quality optical fiber using LSZH cable jacket, terminated with ceramic ferrule connector assuring a high transmission quality.



Applicable Standards

• ISO/IEC 11801; • EN 50173-1; • IEC 61754-1; • IEC 61753-1; • IEC 61300.



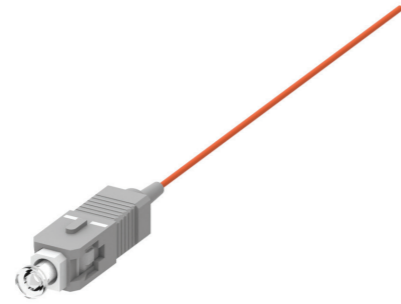
• SPECIFICATIONS					
	ST	SC	FC	SC/APC	LC
Insertion Loss (dB)	< 0.2				
Outer Diameter (mm)	0.9				
Outer Sheath Color	Yellow				

• ORDER INFORMATION					
Code	Description	Conector	Length (m)	Box	
				Dimension (mm)	Quantity (un)
81303107010	Pigtail OS2 G657B3 ST	ST	1.5	220x220x225	200
81302107010	Pigtail OS2 G657B3 SC	SC			
81301107010	Pigtail OS2 G657B3 SC/APC	SC/APC			
81306107010	Pigtail OS2 G657B3 FC	FC			
81305107010	Pigtail OS2 G657B3 LC	LC			

NOTE: Non standards colors, lengths & configurations available on request.

FIBER OPTIC PIGTAIL

OM1 62.5/125



DESCRIPTION

barpa Multimode Simplex Fiber Optic Pigtail provides a fast way to make factory terminations in the field, which can easily be fusion or mechanically spliced in a protective case to an existing fiber. Produced from the highest quality optical fiber using LSZH cable jacket, terminated with ceramic ferrule connector assuring a high transmission quality.



Applicable Standards

• ISO/IEC 11801; • EN 50173-1; • IEC 61754-1; • IEC 61753-1; • IEC 61300.

• SPECIFICATIONS

	ST	SC	LC
Insertion Loss (dB)		< 0.2	
Outer Diameter (mm)		0.9	
Outer Sheath Color		Orange	

• ORDER INFORMATION

Code	Description	Conector	Length (m)	Box	
				Dimension (mm)	Quantity (un)
81303103020	Pigtail OM1 ST	ST	1.5	220x220x225	200
81302103020	Pigtail OM1 SC	SC			
81305103020	Pigtail OM1 LC	LC			

NOTE: Non standards colors, lengths & configurations available on request.

FIBER OPTIC PIGTAIL

OM2 50/125



DESCRIPTION

barpa Multimode Simplex Fiber Optic Pigtail provides a fast way to make factory terminations in the field, which can easily be fusion or mechanically spliced in a protective case to an existing fiber. Produced from the highest quality optical fiber using LSZH cable jacket, terminated with ceramic ferrule connector assuring a high transmission quality.



Applicable Standards

• ISO/IEC 11801; • EN 50173-1; • IEC 61754-1; • IEC 61753-1; • IEC 61300.

• SPECIFICATIONS

	ST	SC	LC
Insertion Loss (dB)		< 0.2	
Outer Diameter (mm)		0.9	
Outer Sheath Color		Orange	

• ORDER INFORMATION

Code	Description	Conector	Length (m)	Box	
				Dimension (mm)	Quantity (un)
81303104020	Pigtail OM2 ST	ST	1.5	220x220x225	200
81302104020	Pigtail OM2 SC	SC			
81305104020	Pigtail OM2 LC	LC			

NOTE: Non standards colors, lengths & configurations available on request.

FIBER OPTIC PIGTAIL

OM3 50/125



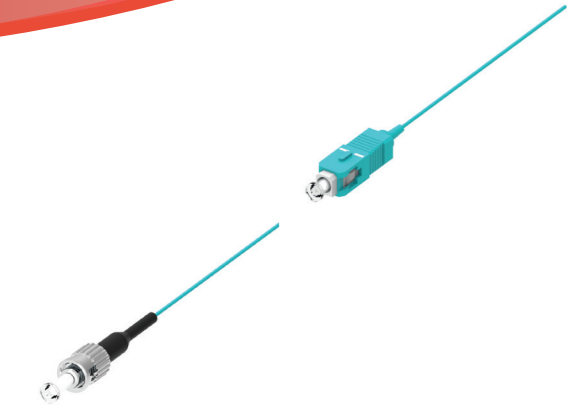
DESCRIPTION

barpa Multimode Simplex Fiber Optic Pigtail provides a fast way to make factory terminations in the field, which can easily be fusion or mechanically spliced in a protective case to an existing fiber. Produced from the highest quality optical fiber using LSZH cable jacket, terminated with ceramic ferrule connector assuring a high transmission quality.



Applicable Standards

• ISO/IEC 11801; • EN 50173-1; • IEC 61754-1; • IEC 61753-1; • IEC 61300.



SPECIFICATIONS

	ST	SC	LC
Insertion Loss (dB)		< 0.2	
Outer Diameter (mm)		0.9	
Outer Sheath Color		Aqua	

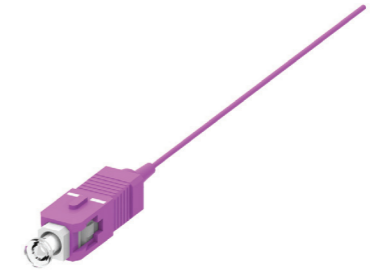
ORDER INFORMATION

Code	Description	Conector	Length (m)	Box	
				Dimension (mm)	Quantity (un)
81303105040	Pigtail OM3 ST	ST	1.5	220x220x225	200
81302105040	Pigtail OM3 SC	SC			
81305105040	Pigtail OM3 LC	LC			

NOTE: Non standards colors, lengths & configurations available on request.

FIBER OPTIC PIGTAIL

OM4 50/125



DESCRIPTION

barpa Multimode Simplex Fiber Optic Pigtail provides a fast way to make factory terminations in the field, which can easily be fusion or mechanically spliced in a protective case to an existing fiber. Produced from the highest quality optical fiber using LSZH cable jacket, terminated with ceramic ferrule connector assuring a high transmission quality.



Applicable Standards

• ISO/IEC 11801; • EN 50173-1; • IEC 61754-1; • IEC 61753-1; • IEC 61300.



SPECIFICATIONS

	SC	LC
Insertion Loss (dB)		< 0.2
Outer Diameter (mm)		0.9
Outer Sheath Color		Purple

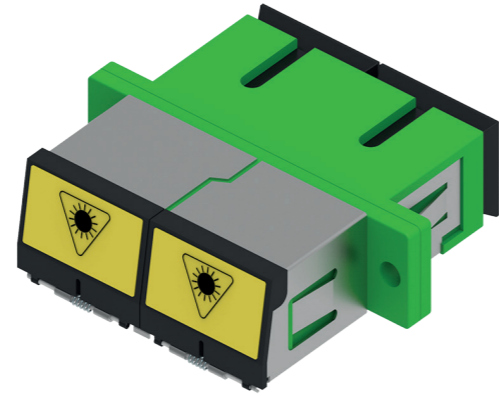
ORDER INFORMATION

Code	Description	Conector	Length (m)	Inner Box	
				Dimension (mm)	Quantity (un)
81302106030	Pigtail OM4 SC Simplex	SC	1.5	220x220x225	200
81305106030	Pigtail OM4 LC Simplex	LC			

NOTE: Non standards colors & configurations available on request.

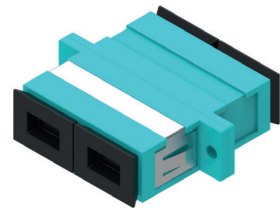
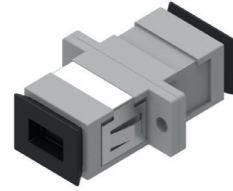
FIBER OPTIC ADAPTER

SC



DESCRIPTION

barpa adapters have been designed to be compact and flexible making it suitable for the interconnection between optical fiber in optical patching panels. With dust protection caps included, the combination of a unique ferrule polishing and a precision metal or plastic housing provides a consistent mechanical and optical performance.



Applicable Standards

• ISO/IEC 11801; • EN 50173-1; • IEC 61754-1; • IEC 61753-1; • IEC 61300.

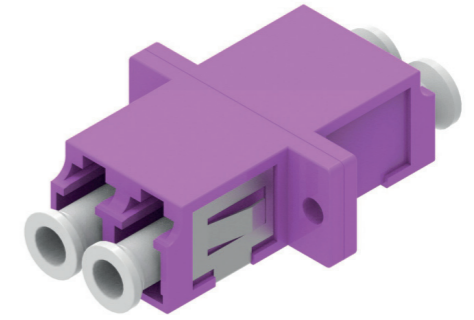
• ORDER INFORMATION

Code	Description	Conector	Category	Type	Color	Quantity (un)
81410213010	Adapter OM2 SC Simplex	SC	OM2	Simplex	Grey	24
81412023010	Adapter OM2 SC Duplex	SC	OM2	Duplex	Grey	19
81411024030	Adapter OM3 SC Simplex	SC	OM3	Simplex	Aqua	24
81412024030	Adapter OM3 SC Duplex	SC	OM3	Duplex	Aqua	19
81411025060	Adapter OM4 SC Simplex	SC	OM4	Simplex	Purple	24
81412025060	Adapter OM4 SC Duplex	SC	OM4	Duplex	Purple	19
81411021040	Adapter OS2 SC Simplex	SC	OS2	Simplex	Blue	24
81412021040	Adapter OS2 SC Duplex	SC	OS2	Duplex	Blue	19
81411011050	Adapter OS2 SC/APC Simplex	SC/APC	OS2	Simplex	Green	24
81412011050	Adapter OS2 SC/APC Duplex	SC/APC	OS2	Duplex	Green	19
81411091050	Adapter OS2 SC/APC Simplex With Cover	SC/APC	OS2	Simplex	Green	48
81412091050	Adapter OS2 SC/APC Duplex With Cover	SC/APC	OS2	Duplex	Green	19
81411111050	Adapter OS2 SC/APC Duplex With Cover Without Flange	SC/APC	OS2	Simplex	Green	50

NOTE: Non standards colors & configurations available on request.

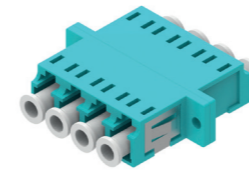
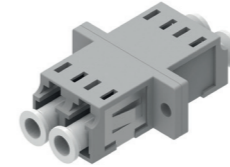
FIBER OPTIC ADAPTER

LC



DESCRIPTION

barpa adapters have been designed to be compact and flexible making it suitable for the interconnection between optical fiber in optical patching panels. With dust protection caps included, the combination of a unique ferrule polishing and a precision metal or plastic housing provides a consistent mechanical and optical performance.



Applicable Standards

• ISO/IEC 11801; • EN 50173-1; • IEC 61754-1; • IEC 61753-1; • IEC 61300.

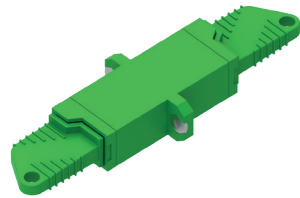
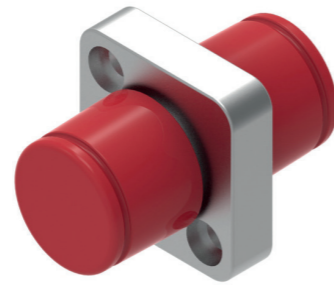
• ORDER INFORMATION

Code	Description	Conector	Category	Type	Color	Quantity (un)
81412053010	Adapter OM2 LC Duplex	LC	OM2	Duplex	Grey	24
81412054030	Adapter OM3 LC Duplex	LC	OM3	Duplex	Aqua	24
81412055060	Adapter OM4 LC Duplex	LC	OM4	Duplex	Purple	24
81412051040	Adapter OS2 LC Duplex	LC	OS2	Duplex	Blue	24
81412041050	Adapter OS2 LC/APC Duplex	LC/APC	OS2	Duplex	Green	24
81413053010	Adapter OM2 LC Quadriplex	LC	OM2	Quadriplex	Beige	19
81413054030	Adapter OM3 LC Quadriplex	LC	OM3	Quadriplex	Aqua	19
81413055060	Adapter OM4 LC Quadriplex	LC	OM4	Quadriplex	Purple	19

NOTE: Non standards colors & configurations available on request.

FIBER OPTIC ADAPTER

FC / ST / b2000



DESCRIPTION

barpa adapters have been designed to be compact and flexible making it suitable for the interconnection between optical fiber in optical patching panels. With dust protection caps included, the combination of a unique ferrule polishing and a precision metal or plastic housing provides a consistent mechanical and optical performance.



Applicable Standards

• ISO/IEC 11801; • EN 50173-1; • IEC 61754-20; • IEC 61753-1; • IEC 61300.

• ORDER INFORMATION

Code	Description	Conector	Category	Type	Color	Quantity (un)
81411061020	Adapter OS2 FC Simplex	FC	OS2	Simplex	Silver/Red Cap	49
81411033020	Adapter OM2 ST Simplex	ST	OM2	Simplex	Silver/Red Cap	40
81411031020	Adapter OS2 ST Simplex	ST	OS2	Simplex	Silver/Red Cap	40
81411071050	Adapter OS2 b2000/APC Simplex	b2000/APC	OS2	Simplex	Green	49
81411081040	Adapter OS2 b2000 Simplex	b2000	OS2	Simplex	Blue	49
81411101050	Adapter OS2 b2000/APC-SC/APC Simplex	b2000/APC-SC/APC	OS2	Simplex	Green	49

NOTE: Non standards colors & configurations available on request.

FIBER OPTIC PATCH PANEL



DESCRIPTION

barpa Fiber Optic Patch Panel is a standard 19". Supplied with pre-configured front panel for fast and easy installation, available to SC duplex, SC simplex and ST. With a high quality material, each panel includes pre-installed splice cassettes, 2 cable glands, a stick with fiber attention, 6 small cable ties, 4 cage nut fixing set and 12 blank covers for unused ports.



Applicable Standards

• EIA 19-inch.

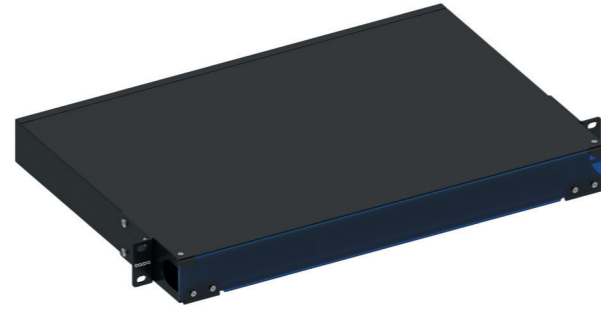
• FEATURES

Thickness (mm)	1.2
Material	Steel
Color	Black (RAL9005)
Dimension (mm)	487x236x43

• ORDER INFORMATION

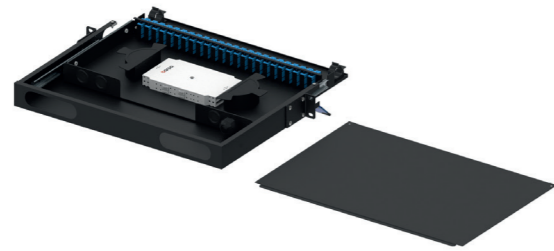
Code	Description	Capacity (Fibers)	Unit Weight (kg)	Inner Box		Carton Box	
				Size (mm)	Quantity (un)	Size (mm)	Quantity (un)
81501010101	Patch Panel for 24 SC Duplex or 48 LC	48	3.00	540x270x52	1	550x280x300	3
81501010102	Patch Panel for 24 SC Simplex	24					
81501010103	Patch Panel for 24 ST	24					

FIBER OPTIC PATCH PANEL



DESCRIPTION

barpa Fiber Optic Patch Panel is a standard 19" with a sliding drawer design. Supplied with pre-configured front panel for fast and easy installation, available to SC duplex and SC simplex. With a high quality material, transparent cover and a good dust-proof, each panel includes pre-installed splice cassettes, 2 cable glands, a stick with fiber attention, 6 small cable ties, 4 cage nut fixing set and 12 blank covers for unused ports.



Applicable Standards

- EIA 19-inch.

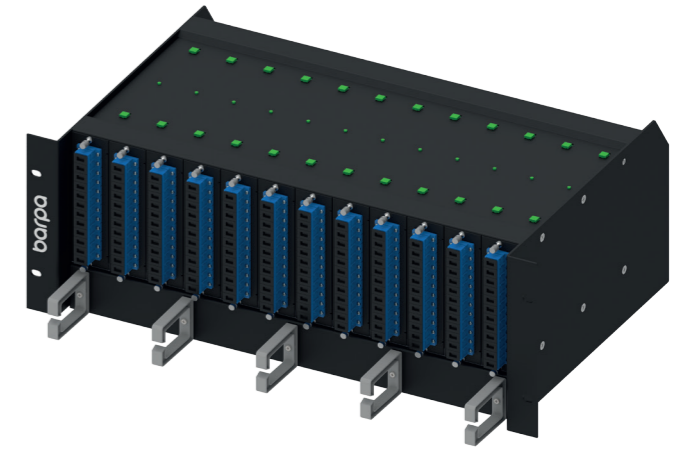
• FEATURES

Thickness (mm)	1.2
Material	Steel
Color	Black (RAL9005)
Dimension (mm)	485x302x43

• ORDER INFORMATION

Code	Description	Capacity (Fibers)	Unit Weight (kg)	Inner Box		Carton Box	
				Size (mm)	Quantity (un)	Size (mm)	Quantity (un)
81501010201	Patch Panel With Cable Management for 24 SC Duplex or 48 LC	48	4.6	520x360x85	1	530x380x280	3
81501010202	Patch Panel With Cable Management for 24 SC Simplex	24					

FIBER OPTIC HIGH DENSITY SUB-RACK



DESCRIPTION

barpa Fiber Optic High Density Sub-Rack is designed based on 4 rack unit height for use as a rack mount interconnect point where connectivity of up to 288 fibers is desired. With a modular design, it is suitable for environments where maximum flexibility is required, typically in data centers and telecommunications closets.



Applicable Standards

- EIA 19-inch

• ORDER INFORMATION

Code	Description	Capacity (Fibers)	Unit Weight (kg)	Inner Box		Carton Box	
				Size (mm)	Quantity (un)	Size (mm)	Quantity (un)
81502010000	Empty High Density Sub-Rack	144/288	6	500x350x240	1	-	-
81502010600	Empty Splice Tray	-	0.15	280x200x130	12	420X290X300	48
81502010100	SC/APC Tray with adapter and pigtail OS2 G652D	12	0.25				
81502010200	SC Tray with adapter and pigtail OS2 G652D	12	0.25				
81502010300	LC Tray with adapter and pigtail OS2 G652D	24	0.22				
81502010400	LC/APC Tray with adapter and pigtail OS2 G652D	24	0.22				
81502010500	b2000 Tray with adapter and pigtail OS2 G652D	12	0.32				
81502010700	Blind cover	-	-	-	-	-	-

NOTE: This images are merely illustrative. Adapters and pigtails not included.

FIBER OPTIC BOX



WALL TERMINATION BOX

barpa Terminal Box is used in FTTH access network, CATV networks and LAN. Suitable for inside applications, with the function of mechanical splice or fusion. With a good dust-proof design, fits 2 adapters with a lock structure for protection. White.

• ORDER INFORMATION						
Code	Unit Weight (kg)	Dimensions (mm)	Inner Box		Carton	
			Size (mm)	Quantity (un)	Size (mm)	Quantity (un)
81601010020	0.09	130x84x24	134x96x33	1	500x420x360	150

WALL TERMINATION BOX

barpa Terminal Box is used in FTTH access network, CATV networks and LAN. Suitable for inside applications, with the function of mechanical splice or fusion. With a good dust-proof design, fits 4 adapters with a lock structure for protection. White.

• ORDER INFORMATION						
Code	Unit Weight (kg)	Dimensions (mm)	Inner Box		Carton	
			Size (mm)	Quantity (un)	Size (mm)	Quantity (un)
81601010040	0.074	101x81x29	106x88x34	1	490x350x370	150

DISTRIBUTION BOX

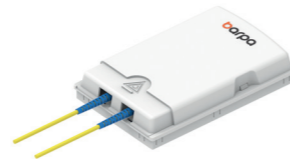
barpa Distribution Box is used in FTTH access network and accomodates 8 fibers. Suitable for inside or outside applications, with the function of mechanical splice or fusion, was designed to enlarge fiber capacity and save cost. With a waterproof, dust-proof and wet-proof design, with total enclosed structure, uses lock type structure for safe use. IP65. White.

• ORDER INFORMATION						
Code	Unit Weight (kg)	Dimensions (mm)	Inner Box		Carton	
			Size (mm)	Quantity (un)	Size (mm)	Quantity (un)
81602010040	0.20	165x100x30	182x130x37	1	660x385x210	50

DISTRIBUTION BOX

barpa Distribution Box is used in FTTH access network and accomodates 12 fibers. Suitable for inside or outside applications, with the function of mechanical splice or fusion, was designed to enlarge fiber capacity and save cost. With a waterproof, dust-proof and wet-proof design, has a total enclosed structure. IP55. Grey.

• ORDER INFORMATION						
Code	Unit Weight (kg)	Dimensions (mm)	Inner Box		Carton	
			Size (mm)	Quantity (un)	Size (mm)	Quantity (un)
81602020120	0.345	197x110x43	233x126x50	1	560x270x255	20



FIBER OPTIC BOX



DISTRIBUTION BOX

barpa Distribution Box is used in FTTH access network. Suitable for inside or outside applications, with the function of mechanical splice or fusion, was designed to enlarge fiber capacity and save cost. With a waterproof, dust-proof and wet-proof design, has a total enclosed structure. IP55. Grey. With a capacity of 24 fibers.

• ORDER INFORMATION						
Code	Unit Weight (kg)	Dimensions (mm)	Inner Box		Carton	
			Size (mm)	Quantity (un)	Size (mm)	Quantity (un)
81602020240	0.650	265x155x54	277x167x61	1	580x355x36	20



TERMINATION BOX

barpa Termination Box is used in FTTH access network as a termination point for the feeder cable to connect with drop cable. Suitable for inside or outside applications, with the function of mechanical splice or fusion, was designed to enlarge fiber capacity and save cost. With a waterproof, dust-proof and wet-proof design, has a total enclosed structure. IP65. White. With a capacity of 24 fibers.

• ORDER INFORMATION						
Code	Unit Weight (kg)	Dimensions (mm)	Inner Box		Carton	
			Size (mm)	Quantity (un)	Size (mm)	Quantity (un)
81602030240	1.3	320x240x100	325x245x105	1	500x330x450	8



WALL DISTRIBUTION BOX

barpa Wall Distribution Box is wall mounted. Supplied with pre-configured front panel for fast and easy installation, available to SC duplex, SC simplex and ST. With a high quality material and a good dust-proof, each panel includes pre-installed splice cassettes, 2 cable glands, a stick with fiber attention, 6 small cable ties, 4 cage nut fixing set and blanks for unused ports.

• ORDER INFORMATION							
Code	Capacity	Unit Weight (kg)	Dimensions (mm)	Inner Box		Carton	
				Size (mm)	Quantity (un)	Size (mm)	Quantity (un)
81602040200	12 SC Duplex	5.0	434x383x56	450x400x75	1	470x420x270	3
81602040300	12 SC Simplex						
81602040400	12 ST						



NOTE: This images are merely illustrative. Adapters and pigtails not included.

COPPER

With barpa copper system you can find the complete solution to your network system. From Cat7A to Cat6, SFTP to UTP, indoor to outdoor, you choose the best cable. To use with the cables, you have the full range of patch cords, keystone jacks and patch panels. Some of the products have Delta certification, which is the highest proof of the quality of our products. For a better performance we recommend all barpa solution.

01 CABLE

02 PATCH CORD

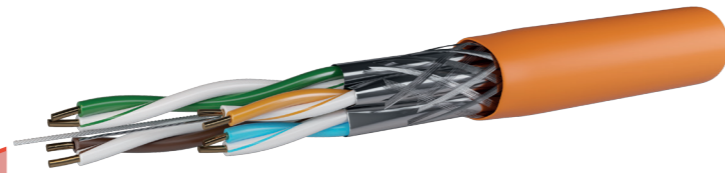
03 KEYSTONE JACK

04 PATCH PANEL



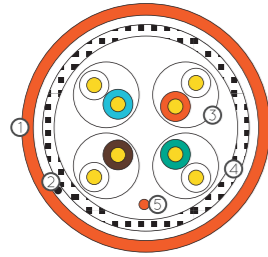
COPPER CABLE

CAT7A S/FTP - LSZH - 23 AWG



DESCRIPTION

The cable is individual screen for each pair and then overall braid screen to improve the quality of the transmission. This cable is designed to Support all Class F_A protocols including 10GBASE-T, with a performance up to 1000MHz. It's used to horizontal and backbone area.



- ① Outer Jacket;
- ② Rip-cord;
- ③ Al/Mylar;
- ④ Braid;
- ⑤ Drain wire.



Applicable Standards

- ISO/IEC 11801; • ISO/IEC 61156-5; • EN 50288-9-1; • EN 50173;
- IEC 60332-3-24; • IEC 60754; • IEC 61034; • YD/T 1019.

• SPECIFICATIONS

Sheath	External O.D. (mm)	7.8 ± 0.5
	Material	LSZH (complies RoHS)
	Color	Orange (RAL2003)
1-100MHz - Impedance (Ω)		100 ± 15
100-250MHz - Impedance (Ω)		100 ± 18
250-1000MHz - Impedance (Ω)		100 ± 25
1-1000MHz - Velocity of Propagation (%) - NVP		74

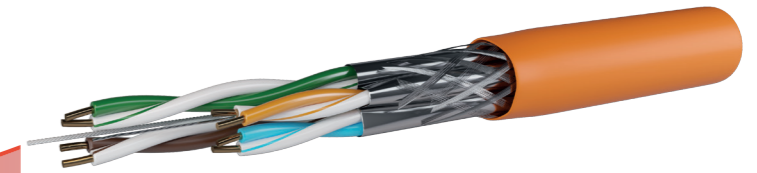
• ORDER INFORMATION

Code	Description	Type of package	Size package (mm)	Gross Weight (kg/item)	Net Weight (kg/item)	Quantity (m)
82225421030	Cable Cat.7A S/FTP LSZH	Drum	∅380x240	19	17.5	305
82225421050	Cable Cat.7A S/FTP LSZH	Drum	∅380x390	31	28.5	500

NOTE: Non standards colors & configurations available on request.
 Available in different CPR classes. Please specify when request.

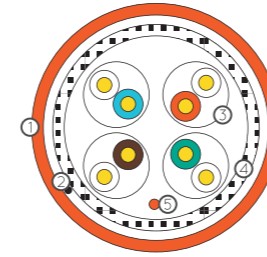
COPPER CABLE

CAT7 S/FTP - LSZH - 23 AWG



DESCRIPTION

The cable is individual screen for each pair and then overall braid screen to improve the quality of the transmission. This cable is designed to Support all Class F protocols including 10GBASE-T, with a performance up to 600MHz. It's used to horizontal and backbone area.



- ① Outer Jacket;
- ② Rip-cord;
- ③ Al/Mylar;
- ④ Braid;
- ⑤ Drain wire.



Applicable Standards

- ISO/IEC 11801; • ISO/IEC 61156-5; • EN 50288-4-1; • EN 50173-1;
- IEC 60332-1; • IEC 60754-2; • IEC 61034; • YD/T 1019.

• SPECIFICATIONS

Sheath	External O.D. (mm)	7.8 ± 0.5
	Material	LSZH (complies RoHS)
	Color	Orange (RAL2003)
1-100MHz - Impedance (Ω)		100 ± 15
100-250MHz - Impedance (Ω)		100 ± 18
250-600MHz - Impedance (Ω)		100 ± 25
1-600MHz - Velocity of Propagation (%) - NVP		74

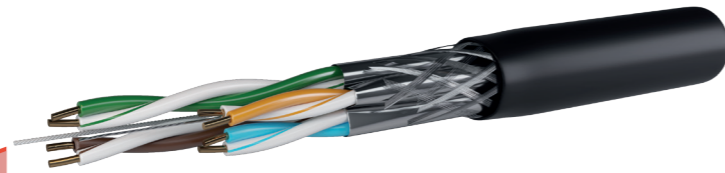
• ORDER INFORMATION

Code	Description	Type of package	Size package (mm)	Gross Weight (kg/item)	Net Weight (kg/item)	Quantity (m)
82224421030	Cable Cat.7 S/FTP LSZH	Drum	∅380x240	19	17.5	305
82224421050	Cable Cat.7 S/FTP LSZH	Drum	∅380x390	31	28.5	500

NOTE: Non standards colors & configurations available on request.
 Available in different CPR classes. Please specify when request.

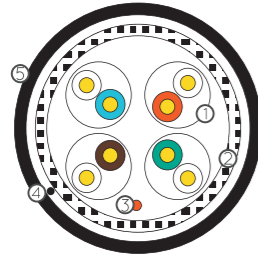
COPPER CABLE

CAT6A S/FTP - PE - 23 AWG



DESCRIPTION

The cable, mainly for outdoor, is individual screen for each pair and then overall braid screen to improve the quality of your permanent-link or channel. This cable is designed to Support all Class E_A protocols including 10GBASE-T, with a performance up to 500MHz.



- ① Aluminum foil;
- ② Braid;
- ③ Drain wire;
- ④ Rip-cord;
- ⑤ Outer Jacket.



Applicable Standards

- ISO/IEC 11801; • ISO/IEC 61156-5; • EN 50288-4-1; • EN 50173-1; • IEC 60332-1;
- IEC 60754-2; • IEC 61034; • YD/T 1019; • ANSI-TIA-568-C.2.

• SPECIFICATIONS

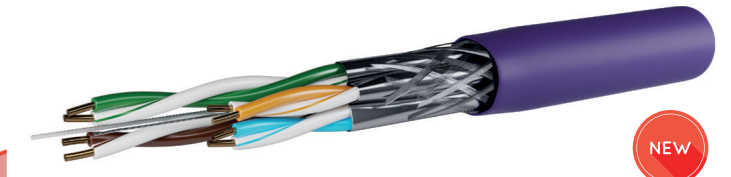
Sheath	External O.D. (mm)	7.6 ± 0.5
	Material	LDPE (complies RoHS)
	Color	Black (RAL9005)
1-500MHz - Impedance (Ω)	100 ± 15	
1-500MHz - Velocity of Propagation (%) - NVP	74	

• ORDER INFORMATION

Code	Description	Type of package	Size package (mm)	Gross Weight (kg/item)	Net Weight (kg/item)	Quantity (m)
82223434050	Cable Cat.6A S/FTP PE	Drum	∅380x390	29.5	27.0	500

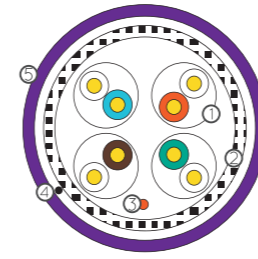
COBRE CABLE

CAT6A S/FTP - LSZH - 23 AWG



DESCRIPTION

This cable has a pair to pair shielding that allows to significantly improve the quality of the permanent link or channel. With a maximum performance of 500MHz and 10G, it was designed to support PoE, voice, video and Gigabit Ethernet.



- ① Aluminum foil;
- ② Braid;
- ③ Drain Wire;
- ④ Rip-Cord;
- ⑤ Jacket.



Applicable Standards

- ISO/IEC 11801; • ISO/IEC 61156-5; • EN 50288-4-1; • EN 50173-1; • IEC 60332-1;
- EN 50575; • IEC 60754-2; • IEC 61034; • YD/T 1019; • ANSI-TIA-568-C.2.

• SPECIFICATIONS

Sheath	External O.D. (mm)	7.6 ± 0.5
	Material	LSZH (complies RoHS)
	Color	Purple (RAL4005)
1-250MHz - Impedance (Ω) 250-500MHz - Impedance (Ω)	100 ± 15 100 ± 22	
1-500MHz - Velocity of Propagation (%) - NVP	74	

• ORDER INFORMATION

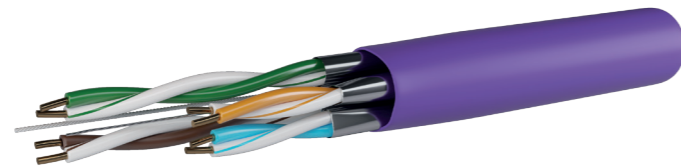
Code	Description	Type of package	Size package (mm)	Gross Weight (kg/item)	Net Weight (kg/item)	Quantity (m)
82223422050	Cable Cat.6A S/FTP LSZH	Bobina	∅380x390	30.3	27.8	500

NOTE: Non standards colors & configurations available on request.

COPPER CABLE

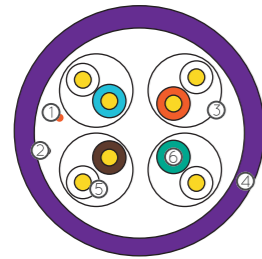


CAT6A U/FTP - LSZH - 23 AWG



DESCRIPTION

The cable is individual screen for each pair to improve the quality of your permanent-link or channel. This cable is designed to Support all Class E_A protocols including 10GBASE-T, with a performance up to 500MHz.



- ① Drain wire;
- ② Rip-cord;
- ③ Aluminum foil;
- ④ Outer Jacket;
- ⑤ Insulation;
- ⑥ Conductor.

25
YEARS
WARRANTY

LSZH

23
AWG

ROHS

CE

Applicable Standards

- ISO/IEC 11801 • ISO/IEC 61156-5 • EN 50288-4-1 • EN 50173-1 • IEC 60332-1
- IEC 60754-2 • IEC 61034 • YD/T 1019 • ANSI-TIA-568-C.2

• SPECIFICATIONS

Sheath	External O.D. (mm)	7.4 ± 0.5
	Material	LSZH (complies RoHS)
	Color	Purple (RAL4005)
1-250MHz - Impedance (Ω)		100 ± 15
250-500MHz - Impedance (Ω)		100 ± 22
1-500MHz - Velocity of Propagation (%) - NVP		74

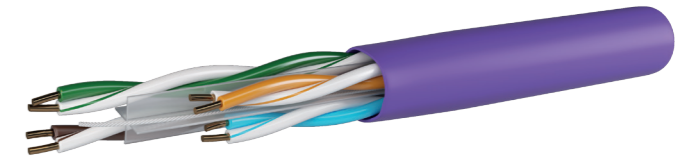
• ORDER INFORMATION

Code	Description	Type of package	Size package (mm)	Gross Weight (kg/item)	Net Weight (kg/item)	Quantity (m)
82223222030	Cable Cat.6A U/FTP LSZH	Drum	∅380x240	16.5	15	305
82223222050	Cable Cat.6A U/FTP LSZH	Drum	∅380x390	27	24.5	500

NOTE: Non standards colors & configurations available on request.
 Available in different CPR classes. Please specify when request.

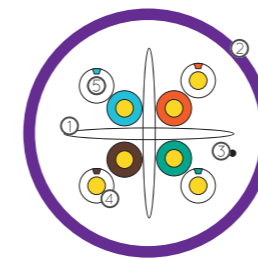
COPPER CABLE

CAT6A U/UTP - LSZH - 23 AWG



DESCRIPTION

Unscreened Cat6 Augmented barpa cable has a high performance for your permanent-link or channel. This cable is designed to Support all Class E_A protocols including 10GBASE-T, with a performance up to 500MHz.



- ① Cross Separator;
- ② Outer Jacket;
- ③ Rip-cord;
- ④ Insulation;
- ⑤ Conductor.

25
YEARS
WARRANTY

LSZH

23
AWG

ROHS

CE

Applicable Standards

- ISO/IEC 11801 • ISO/IEC 61156-5 • EN 50288-4-1 • EN 50173-1 • IEC 60332-1
- IEC 60754-2 • IEC 61034 • YD/T 1019 • ANSI-TIA-568-C.2

• SPECIFICATIONS

Sheath	External O.D. (mm)	7.1 ± 0.4
	Material	LSZH (complies RoHS)
	Color	Purple (RAL4005)
1-500MHz - Impedance (Ω)		100 ± 15
1-500MHz - Velocity of Propagation (%) - NVP		68

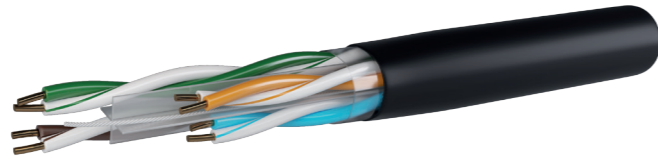
• ORDER INFORMATION

Code	Description	Type of package	Size package (mm)	Gross Weight (kg/item)	Net Weight (kg/item)	Quantity (m)
82223122030	Cable Cat.6A U/UTP LSZH	Reel in box	375x335x375	16.5	14.5	305
82223122050	Cable Cat.6A U/UTP LSZH	Drum	∅380x320	25.7	23.7	500

NOTE: Non standards colors & configurations available on request.
 Available in different CPR classes. Please specify when request.

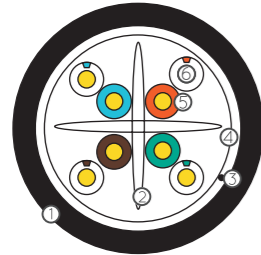
COPPER CABLE

CAT6A U/UTP - PE - 23 AWG



DESCRIPTION

Unscreened Cat6 Augmented barpa cable has a high performance for your permanent-link or channel to use in the exterior. This cable is designed to Support all Class E_A protocols including 10GBASE-T, with a performance up to 500MHz.



- ① Outer Jacket;
- ② Cross Separator;
- ③ Rip-cord;
- ④ PET tape;
- ⑤ Insulation;
- ⑥ Conductor.



Applicable Standards

• ISO/IEC 11801; • ISO/IEC 61156-5; • EN 50288-4-1; • EN 50173-1; • IEC 60332-1; • IEC 60754-2; • IEC 61034; • YD/T 1019; • ANSI-TIA-568-C.2.

• SPECIFICATIONS

Sheath	External O.D. (mm)	6.9 ± 0.5
	Material	LDPE (complies RoHS)
	Color	Black (RAL9005)
1-500MHz - Impedance (Ω)		100 ± 15
1-500MHz - Velocity of Propagation (%) - NVP		69

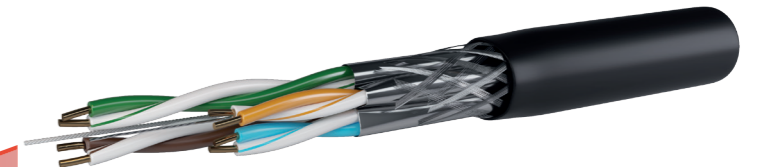
• ORDER INFORMATION

Code	Description	Type of package	Size package (mm)	Gross Weight (kg/item)	Net Weight (kg/item)	Quantity (m)
82223134050	Cable Cat.6A U/UTP PE	Drum	∅380x320	24	22	500

NOTE: Non standards colors & configurations available on request.

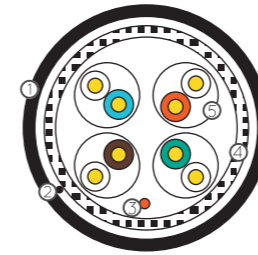
COPPER CABLE

CAT6 S/FTP - PE - 23 AWG



DESCRIPTION

The cable, mainly for outdoor, is individual screen for each pair and then overall braid screen to improve the quality of your permanent-link or channel. This cable is designed to Support PoE, voice, video and Gigabit Ethernet, with a performance up to 250MHz (550MHz is also reachable).



- ① Outer Jacket;
- ② Rip-cord;
- ③ Drain wire;
- ④ Braid;
- ⑤ Aluminum foil.



Applicable Standards

• ISO/IEC 11801; • ISO/IEC 61156-5; • EN 50288-6-1; • EN 50173-1; • IEC 60332-1; • IEC 60754-2; • IEC 61034; • YD/T 1019; • ANSI-TIA-568-C.2.

• SPECIFICATIONS

Sheath	External O.D. (mm)	7.6 ± 0.5
	Material	LPDE (complies RoHS)
	Color	Black (RAL9005)
1-250MHz - Impedance (Ω)		100 ± 15
1-250MHz - Velocity of Propagation (%) - NVP		74

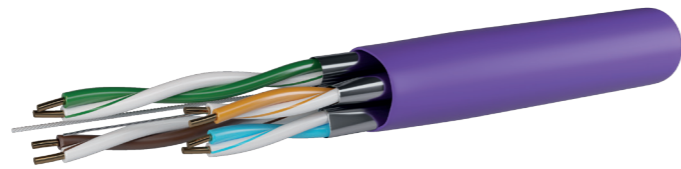
• ORDER INFORMATION

Code	Description	Type of package	Size package (mm)	Gross Weight (kg/item)	Net Weight (kg/item)	Quantity (m)
8222434050	Cable Cat.6 S/FTP PE	Drum	∅380x385	27	24.5	500

NOTE: Non standards colors & configurations available on request.

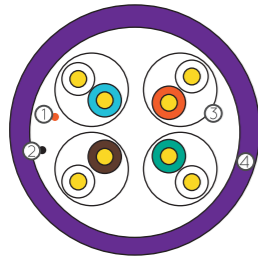
COPPER CABLE

CAT6 U/FTP - LSZH - 23 AWG



DESCRIPTION

The cable is individual screen for each pair to improve the quality of your permanent-link or channel. This cable is designed to Support PoE, voice, video and Gigabit Ethernet, with a performance up to 250MHz (550MHz is also reachable).



- ① Drain wire;
- ② Rip-cord;
- ③ Aluminum foil;
- ④ Outer Jacket.



Applicable Standards

- ISO/IEC 11801; • ISO/IEC 61156-5; • EN 50288-6-1; • EN 50173-1; • IEC 60332-1; • IEC 60754-2; • IEC 61034; • YD/T 1019; • ANSI-TIA-568-C.2.

• SPECIFICATIONS

Sheath	External O.D. (mm)	7.3 ± 0.4
	Material	LSZH (complies RoHS)
	Color	Purple (RAL4005)
1-250MHz - Impedance (Ω)		100 ± 15
1-250MHz - Velocity of Propagation (%) - NVP		74

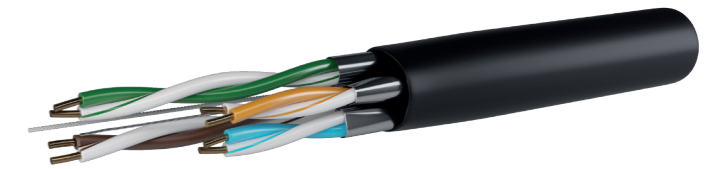
• ORDER INFORMATION

Code	Description	Type of package	Size package (mm)	Gross Weight (kg/item)	Net Weight (kg/item)	Quantity (m)
82222222030	Cable Cat.6 U/FTP LSZH	Reel in Box	375x335x375	17	15	305
82222222100	Cable Cat.6 U/FTP LSZH	Drum	∅570x325	53.5	49	1000

NOTE: Non standards colors & configurations available on request.
Available in different CPR classes. Please specify when request.

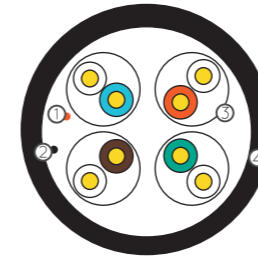
COPPER CABLE

CAT6 U/FTP - PE - 23 AWG



DESCRIPTION

The cable is individual screen for each pair to improve the quality of your permanent-link or channel. This cable is designed to Support PoE, voice, video and Gigabit Ethernet, with a performance up to 250MHz (550MHz is also reachable).



- ① Drain wire;
- ② Rip-cord;
- ③ Aluminum foil;
- ④ Outer Jacket.



Applicable Standards

- ISO/IEC 11801; • ISO/IEC 61156-5; • EN 50288-6-1; • EN 50173-1; • IEC 60332-1; • IEC 60754-2; • IEC 61034; • YD/T 1019; • ANSI-TIA-568-C.2.

• SPECIFICATIONS

Sheath	External O.D. (mm)	7.3 ± 0.4
	Material	LDPE (complies RoHS)
	Color	Black (RAL9005)
1-250MHz - Impedance (Ω)		100 ± 15
1-250MHz - Velocity of Propagation (%) - NVP		74

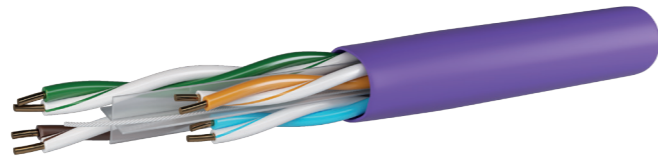
• ORDER INFORMATION

Code	Description	Type of package	Size package (mm)	Gross Weight (kg/item)	Net Weight (kg/item)	Quantity (m)
82222234050	Cable Cat.6 U/FTP PE	Drum	∅380x390	25.5	23	500

NOTE: Non standards colors & configurations available on request.

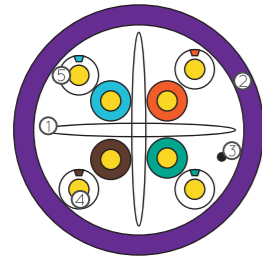
COPPER CABLE

CAT6 U/UTP - LSZH - 23 AWG



DESCRIPTION

Unscreened Cat6 barpa cable has a high performance for your permanent-link or channel. This cable is designed to support PoE, voice, video and Gigabit Ethernet, with a performance up to 250MHz (550MHz is also reachable).



- ① Cross Separator;
- ② Outer Jacket;
- ③ Rip-cord;
- ④ Insulation;
- ⑤ Conductor.



Applicable Standards

• ISO/IEC 11801; • ISO/IEC 61156-5; • EN 50288-6-1; • EN 50173-1; • IEC 60332-1; • IEC 60754-2; • IEC 61034; • YD/T 1019; • ANSI-TIA-568-C.2.

SPECIFICATIONS

Sheath	External O.D. (mm)	6.0 ± 0.4
	Material	LSZH (complies RoHS)
	Color	Purple (RAL4005)
1-250MHz - Impedance (Ω)	100 ± 15	
1-250MHz - Velocity of Propagation (%) - NVP	69	

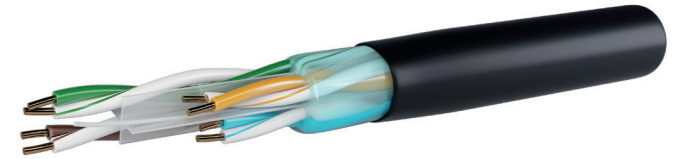
ORDER INFORMATION

Code	Description	Type of package	Size package (mm)	Gross Weight (kg/item)	Net Weight (kg/item)	Quantity (m)
82222122030	Cable Cat.6 U/UTP LSZH	Reel in box	330x265x350	15	13	305
82222122050	Cable Cat.6 U/UTP LSZH	Drum	∅370x300	22.5	20.5	500
82222122100	Cable Cat.6 U/UTP LSZH	Drum	∅560x235	45.5	41	1000

NOTE: Non standards colors & configurations available on request.
Available in different CPR classes. Please specify when request.

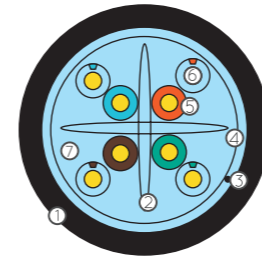
COPPER CABLE

CAT6 U/UTP - PE - JELLY FILLED 23 AWG



DESCRIPTION

This cable has a high performance for permanent link or channel. With a maximum performance of 250MHz and 1G, it was designed to support PoE, voice, video and Gigabit Ethernet. The gel allows to repel the humidity (greater protection of humidity).



- ① Outer Jacket;
- ② Cross Separator;
- ③ Rip-cord;
- ④ PET tape;
- ⑤ Insulation;
- ⑥ Conductor;
- ⑦ Jelly Filled.



Applicable Standards

• ISO/IEC 11801; • ISO/IEC 61156-5; • EN 50288-6-1; • EN 50173; • YD/T 1019; • ANSI-TIA-568-C.2.

SPECIFICATIONS

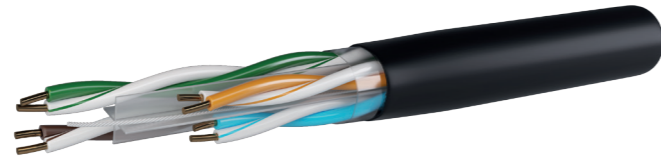
Sheath	External O.D. (mm)	1.12 ± 0.05
	Material	LDPE (complies RoHS)
	Color	Black (RAL9005)
1-250MHz - Impedance (Ω)	100 ± 15	
1-250MHz - Velocity of Propagation (%) - NVP	65	

ORDER INFORMATION

Code	Description	Type of package	Size package (mm)	Gross Weight (kg/item)	Net Weight (kg/item)	Quantity (m)
82222144030	Cable Cat.6 U/UTP PE Jelly Filled	Reel	380x380x260	15	13	305

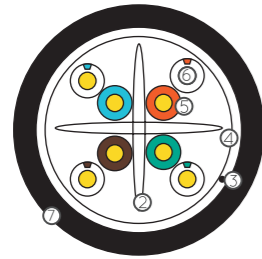
COPPER CABLE

CAT6 U/UTP - PE - 23 AWG



DESCRIPTION

Unscreened Cat6 barpa cable has a high performance for your permanent-link or channel. This cable is designed to Support PoE, voice, video and Gigabit Ethernet, with a performance up to 250MHz (550MHz is also reachable).



- ① PE jacket;
- ② Cross Separator;
- ③ Rip-cord;
- ④ PET tape;
- ⑤ Insulation;
- ⑥ Conductor;
- ⑦ Outer Jacket.



Applicable Standards

• ISO/IEC 11801; • ISO/IEC 61156-5; • EN 50288-6-1; • EN 50173-1; • IEC 60332-1; • IEC 60754-2; • IEC 61034; • YD/T 1019; • ANSI-TIA-568-C.2.

SPECIFICATIONS

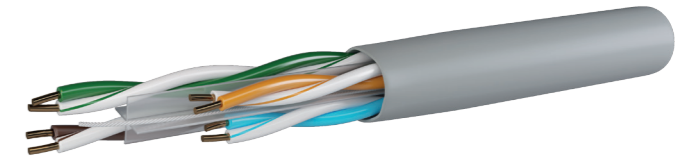
Sheath	External O.D. (mm)	6.4 ± 0.5
	Material	LDPE (complies RoHS)
	Color	Black (RAL9005)
1-250MHz - Impedance (Ω)		100 ± 15
1-250MHz - Velocity of Propagation (%) - NVP		69

ORDER INFORMATION

Code	Description	Type of package	Size package (mm)	Gross Weight (kg/item)	Net Weight (kg/item)	Quantity (m)
82222134050	Cable Cat.6 U/UTP PE	Drum	∅370x320	24.0	21.5	500
82222134100	Cable Cat.6 U/UTP PE	Drum	∅560x240	42.2	37.7	1000

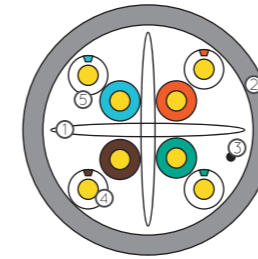
COPPER CABLE

CAT6 U/UTP - PVC - 23 AWG



DESCRIPTION

Unscreened Cat6 barpa cable in PVC jacket is used for less demanding environments. This cable is designed to Support PoE, voice, video and Gigabit Ethernet, with a performance up to 250MHz.



- ① Cross Separator;
- ② Sheath;
- ③ Rip-cord;
- ④ Insulation;
- ⑤ Conductor.



Applicable Standards

• ISO/IEC 11801; • ISO/IEC 61156-5; • EN 50288-6-1; • EN 50173-1; • IEC 60332-1; • IEC 60754-2; • IEC 61034; • YD/T 1019; • ANSI-TIA-568-C.2.

SPECIFICATIONS

Sheath	External O.D. (mm)	6.0 ± 0.4
	Material	PVC (complies RoHS)
	Color	Grey (RAL7035)
1-250MHz - Impedance (Ω)		100 ± 15
1-250MHz - Velocity of Propagation (%) - NVP		69

ORDER INFORMATION

Code	Description	Type of package	Size package (mm)	Gross Weight (kg/item)	Net Weight (kg/item)	Quantity (m)
82222113030	Cable Cat.6 U/UTP PVC	Box	400x400x220	13.3	12.5	305
82222113100	Cable Cat.6 U/UTP PVC	Drum	∅560x240	45.5	41	1000

NOTE: Non standards colors & configurations available on request.

NOTE: Non standards colors & configurations available on request.

Available in ECA.

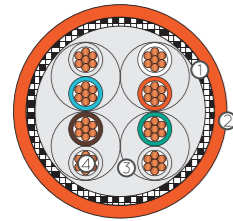
COPPER PATCH CORD

CAT6A S/FTP - LSZH



DESCRIPTION

The barpa Category 6_A S/FTP (Screened Twisted Pair) patch cord belongs to the barpa 10G cabling system. Supports all applications up to 500MHz.



- ① Al/Mylar;
- ② Outer Jacket;
- ③ Aluminum Foil;
- ④ Conductor.



Applicable Standards

• ANSI/TIA-568-C.2; • ISO/IEC 11801; • EN 50173; • IEC 61935-2.

• SPECIFICATIONS	
Material	Copper
Conductor (AWG)	26
Cable Diameter (mm)	5.8 ± 0.02

• PART NUMBER BREAKDOWN - ORDER INFORMATION

8 2 2 1 3 2 2 **C M M M**

COLOR	Grey	Yellow	Blue	Green	Orange	Red	Black	White
C	1	2	3	4	5	6	7	8

METERS	0.5	1	2	3	5	7	10	15	20	25	30	50
M M M	005	010	020	030	050	070	100	150	200	250	300	500

• GREY (RAL7035); • YELLOW (RAL1018); • BLUE (RAL5017); • GREEN (RAL6016); • ORANGE (RAL2008); • RED (RAL3028); • BLACK (RAL9005).
NOTE: Non standards colors, lengths & configurations available on request.
More than 5m without Delta certificate.

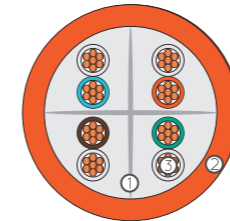
COPPER PATCH CORD

CAT6A U/UTP - LSZH



DESCRIPTION

The barpa Category 6_A UTP (Unscreened Twisted Pair) patch cord belongs to the barpa 10G cabling system. Supports all applications up to 500MHz.



- ① Cross Separator;
- ② Outer Jacket;
- ③ Conductor.



Applicable Standards

• ANSI/TIA-568-C.2; • ISO/IEC 11801; • EN 50173; • IEC 61935-2.

• SPECIFICATIONS	
Material	Copper
Conductor (AWG)	24
Cable Diameter (mm)	5.8 ± 0.03

• PART NUMBER BREAKDOWN - ORDER INFORMATION

8 2 2 1 3 1 2 **C M M M**

COLOR	Grey	Yellow	Blue	Green	Orange	Red	Black	White
C	1	2	3	4	5	6	7	8

METERS	0.5	1	2	3	5	7	10	15	20	25	30	50
M M M	005	010	020	030	050	070	100	150	200	250	300	500

• GREY (RAL7035); • YELLOW (RAL1018); • BLUE (RAL5017); • GREEN (RAL6016); • ORANGE (RAL2008); • RED (RAL3028); • BLACK (RAL9005).
NOTE: Non standards colors, lengths & configurations available on request.

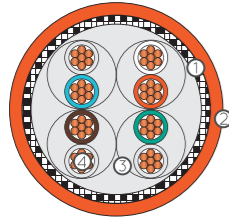
COPPER PATCH CORD

CAT6 S/FTP - LSZH



DESCRIPTION

The barpa Category 6 S/FTP (Screened Twisted Pair) patch cord belongs to the barpa cabling system. Supports all applications up to 250MHz.



- ① Al/Mylar;
- ② Outer Jacket;
- ③ Aluminum Foil;
- ④ Conductor.



Applicable Standards

• ANSI/TIA-568-C.2; • ISO/IEC 11801; • EN 50173; • IEC 61935-2.

• SPECIFICATIONS

Material	Copper
Conductor (AWG)	27
Cable Diameter (mm)	5.6 ± 0.02

• PART NUMBER BREAKDOWN - ORDER INFORMATION

8 2 2 1 2 2 2 C M M M

COLOR	Grey	Yellow	Blue	Green	Orange	Red	Black	White
C	1	2	3	4	5	6	7	8

METERS	0.5	1	2	3	5	7	10	15	20	25	30	50
M M M	005	010	020	030	050	070	100	150	200	250	300	500

• GREY (RAL7035); • YELLOW (RAL1018); • BLUE (RAL5017); • GREEN (RAL6016); • ORANGE (RAL2008); • RED (RAL3028); • BLACK (RAL9005).
NOTE: Non standards colors, lengths & configurations available on request.
More than 5m without Delta certificate.

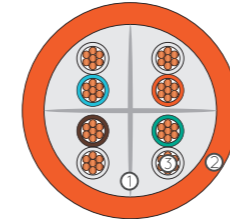
COPPER PATCH CORD

CAT6 U/UTP - LSZH



DESCRIPTION

The barpa Category 6 UTP (Unscreened Twisted Pair) patch cord belongs to the barpa cabling system. Supports all applications up to 250MHz.



- ① Cross Separator;
- ② Outer Jacket;
- ③ Conductor.



Applicable Standards

• ANSI/TIA-568-C.2; • ISO/IEC 11801; • EN 50173; • IEC 61935-2.

• SPECIFICATIONS

Material	Copper
Conductor (AWG)	26
Cable Diameter (mm)	5.0 ± 0.03

• PART NUMBER BREAKDOWN - ORDER INFORMATION

8 2 2 1 2 1 2 C M M M

COLOR	Grey	Yellow	Blue	Green	Orange	Red	Black	White
C	1	2	3	4	5	6	7	8

METERS	0.5	1	2	3	5	7	10	15	20	25	30	50
M M M	005	010	020	030	050	070	100	150	200	250	300	500

• GREY (RAL7035); • YELLOW (RAL1018); • BLUE (RAL5017); • GREEN (RAL6016); • ORANGE (RAL2008); • RED (RAL3028); • BLACK (RAL9005).
NOTE: Non standards colors, lengths & configurations available on request.
More than 5m without Delta certificate.

COPPER KEYSTONE JACK

CAT6A SHIELDED SILVER TOOLLESS



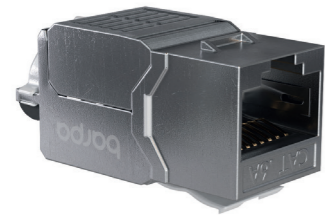
DESCRIPTION

The barpa Category 6A STP (Screened Twisted Pair) jack belongs to the barpa 10G cabling system. This jack has unique and simple design done to be easy for termination but always thinking about excellent electrical performance. Supports all the applications up to 500Mhz. Cable bundle is one of the special physical characteristics, that promotes quick installation and fast termination. It's up to you to try it.



Applicable Standards

- IEC 60603-7-4; • IEC 60512-26-100; • ISO/IEC 11801 ed.2.2;
- EN 50173-1; • ANSI/TIA 568-B.2-1.

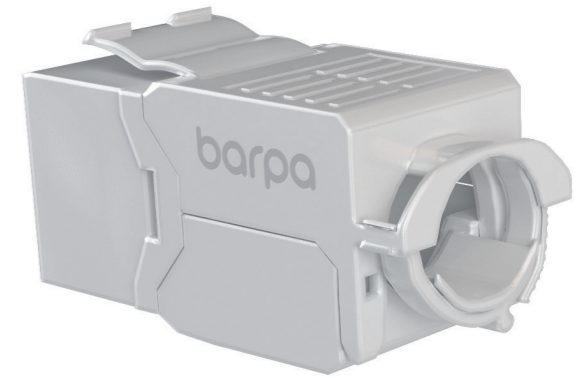


• SPECIFICATIONS	
Orientation	180°
Wiring	T568A/B
IDC Contacts - Solid Cable	Accept 22-24 AWG solid with a insulation diameter of 0.45-0.55 mm
IDC Contacts - Stranded Cable	Accept 22-26 AWG stranded with a insulation diameter of 0.48-0.76 mm

• ORDER INFORMATION								
Code	Description	Unit Weight (kg)	Polybag		Inner Box		Carton	
			Size (mm)	Quantity (un)	Size (mm)	Quantity (un)	Size (mm)	Quantity (un)
82243222180	Cat6A Shielded Silver Toolless	0.025	122x78x0.12	1	275x160x70	50	345x290x400	500

COPPER KEYSTONE JACK

CAT6A UNSHIELDED WHITE TOOLLESS



DESCRIPTION

The barpa Category 6A UTP (Unscreened Twisted Pair) jack belongs to the barpa 10G cabling system. This jack has unique and simple design done to be easy for termination but always thinking about excellent electrical performance. Supports all applications up to 500Mhz. Cable bundle is one of the special physical characteristics, that promotes quick installation and fast termination. It's up to you to try it.



Applicable Standards

- IEC 60603-7-4; • IEC 60512-26-100; • ISO/IEC 11801 ed.2.2;
- EN 50173-1; • ANSI/TIA 568-B.2-1.



• SPECIFICATIONS	
Orientation	180°
Wiring	T568A/B
IDC Contacts - Solid Cable	Accept 22-24 AWG solid with a insulation diameter of 0.45-0.55 mm
IDC Contacts - Stranded Cable	Accept 22-26 AWG stranded with a insulation diameter of 0.48-0.76 mm

• ORDER INFORMATION								
Code	Description	Unit Weight (kg)	Polybag		Inner Box		Carton	
			Size (mm)	Quantity (un)	Size (mm)	Quantity (un)	Size (mm)	Quantity (un)
82243210180	Cat6A Unshielded White Toolless	0.009	122x78x0.12	1	275x160x70	50	345x290x400	500

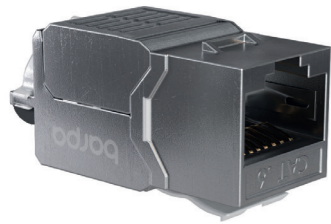
COPPER KEYSTONE JACK

CAT6 SHIELDED SILVER TOOLLESS



DESCRIPTION

The barpa Category 6 STP (Screened Twisted Pair) jack belongs to the barpa 1G cabling system. This jack has unique and simple design done to be easy for termination but always thinking about excellent electrical performance. Supports all applications up to 350Mhz. Cable bundle is one of the special physical characteristics, that promotes quick installation and fast termination. It's up to you to try it.



Applicable Standards

- IEC 60603-7-4; • IEC 60512-26-100; • ISO/IEC 11801 ed.2.2;
- EN 50173-1; • ANSI/TIA 568-B.2-1.

• SPECIFICATIONS

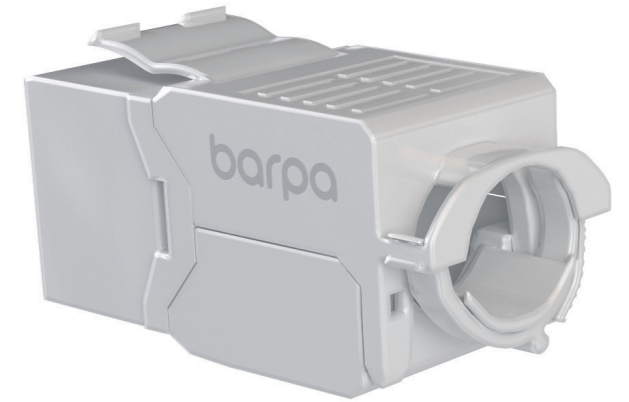
Orientation	180°
Wiring	T568A/B
IDC Contacts - Solid Cable	Accept 22-24 AWG solid with a insulation diameter of 0.45-0.55 mm
IDC Contacts - Stranded Cable	Accept 22-26 AWG stranded with a insulation diameter of 0.48-0.76 mm

• ORDER INFORMATION

Code	Description	Unit Weight (kg)	Polybag		Inner Box		Carton	
			Size (mm)	Quantity (un)	Size (mm)	Quantity (un)	Size (mm)	Quantity (un)
8224222180	Cat6 Shielded Silver Toolless	0.025	122x78x0.12	1	275x160x70	50	345x290x400	500

COPPER KEYSTONE JACK

CAT6 UNSHIELDED WHITE TOOLLESS



DESCRIPTION

The barpa Category 6 UTP (Unscreened Twisted Pair) jack belongs to the barpa 1G cabling system. This jack has unique and simple design done to be easy for termination but always thinking about excellent electrical performance. Supports all applications up to 500Mhz. Cable bundle is one of the special physical characteristics, that promotes quick installation and fast termination. It's up to you to try it.



Applicable Standards

- IEC 60603-7-4; • IEC 60512-26-100; • ISO/IEC 11801 ed.2.2;
- EN 50173-1; • ANSI/TIA 568-B.2-1.

• SPECIFICATIONS

Orientation	180°
Wiring	T568A/B
IDC Contacts - Solid Cable	Accept 22-24 AWG solid with a insulation diameter of 0.45-0.55 mm
IDC Contacts - Stranded Cable	Accept 22-26 AWG stranded with a insulation diameter of 0.48-0.76 mm

• ORDER INFORMATION

Code	Description	Unit Weight (kg)	Polybag		Inner Box		Carton	
			Size (mm)	Quantity (un)	Size (mm)	Quantity (un)	Size (mm)	Quantity (un)
82242210180	Cat6 Unshielded White Toolless	0.009	122x78x0.12	1	275x160x70	50	345x290x400	500

COPPER PATCH PANEL

CAT6A STP 24 PORT
1U IDC 90°



DESCRIPTION

The barpa Category 6A STP (Screened Twisted Pair) patch panel belongs to the barpa 10G cabling system. This shielded version gives the maximum protection from EMI/RFI interference. Supports all applications up to 500Mhz. Cable bundle is one of the special physical characteristics, that promotes quick installation and fast termination. It's up to you to try it.



Applicable Standards

- IEC 60603-7-4; • IEC 60512-26-100; • ISO/IEC 11801 ed.2.2;
- EN 50173-1; • ANSI/TIA 568-B.2-1.

• SPECIFICATIONS

Color	Black (RAL9005)
IDC Contacts - Solid Cable	Accept 22-24 AWG solid with a insulation diameter of 0.45-0.55 mm
IDC Contacts - Stranded Cable	Accept 22-26 AWG stranded with a insulation diameter of 0.48-0.76 mm

• ORDER INFORMATION

Code	Description	Unit Weight (kg)	Inner Box		Carton	
			Size (mm)	Quantity (un)	Size (mm)	Quantity (un)
82234421124	Cat 6A STP IDC Style 90° 24 Ports 1U	1.390	505x120x55	1	520x260x300	10

COPPER PATCH PANEL

CAT6 STP 24 PORT
1U IDC 90°



DESCRIPTION

The barpa Category 6 STP (Screened Twisted Pair) patch panel belongs to the barpa 1G cabling system. This shielded version gives the maximum protection from EMI/RFI interference. Supports all applications up to 250Mhz. Cable bundle is one of the special physical characteristics, that promotes quick installation and fast termination. It's up to you to try it.



Applicable Standards

- IEC 60603-7-4; • IEC 60512-26-100; • ISO/IEC 11801 ed.2.2;
- EN 50173-1; • ANSI/TIA 568-B.2-1.

• SPECIFICATIONS

Color	Black (RAL9005)
IDC Contacts - Solid Cable	Accept 22-24 AWG solid with a insulation diameter of 0.45-0.55 mm
IDC Contacts - Stranded Cable	Accept 22-26 AWG stranded with a insulation diameter of 0.48-0.76 mm

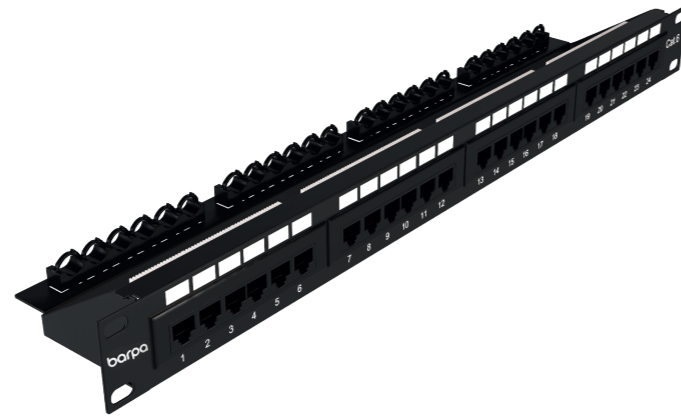
• ORDER INFORMATION

Code	Description	Unit Weight (kg)	Inner Box		Carton	
			Size (mm)	Quantity (un)	Size (mm)	Quantity (un)
82233421124	Cat 6 STP IDC Style 90° 24 Ports 1U	1.39	505x120x55	1	520x260x300	10

COPPER PATCH PANEL



CAT6 UTP 24 PORT
1U IDC 180°



DESCRIPTION

The barpa Category 6 UTP (Unscreened Twisted Pair) patch panel belongs to the barpa 1G cabling system. Supports all applications up to 250Mhz. Cable bundle is one of the special physical characteristics, that promotes quick installation and fast termination. It's up to you to try it.



Applicable Standards

- IEC 60603-7-4; • IEC 60512-26-100; • ISO/IEC 11801 ed.2.2;
- EN 50173-1; • ANSI/TIA 568-B.2-1.

• SPECIFICATIONS

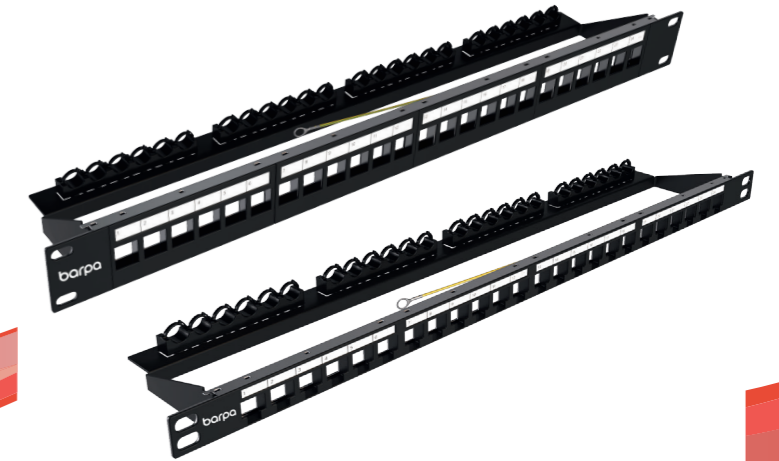
Color	Black (RAL9005)
IDC Contacts - Solid Cable	Accept 22-24 AWG solid with a insulation diameter of 0.45-0.55 mm
IDC Contacts - Stranded Cable	Accept 22-26 AWG stranded with a insulation diameter of 0.48-0.76 mm

• ORDER INFORMATION

Code	Description	Unit Weight (kg)	Inner Box		Carton	
			Size (mm)	Quantity (un)	Size (mm)	Quantity (un)
82233511124	Cat 6 UTP IDC Style 180° 24 Ports 1U	0.670	505x120x55	1	520x260x300	10

COPPER PATCH PANEL

EMPTY PATCH PANEL 24 PORT



DESCRIPTION

This Patch Panel belongs to our Empty Patch Panel range. Suitable to use STP and UTP barpa keystone jacks. Has a very special design with cable bundle, that promotes quick installation and fast termination. It's up to you to try it.



Applicable Standards

- EIA 19-inch.

• SPECIFICATIONS

Color	Black (RAL9005)
-------	-----------------

• ORDER INFORMATION

Code	Description	Unit Weight (kg)	Inner Box		Carton	
			Size (mm)	Quantity (un)	Size (mm)	Quantity (un)
82230101124	Empty Patch Panel 24P 1U	0.46	505x120x55	1	520x260x300	10
82230101024	Empty Patch Panel 24P 0.5U	0.40	505x120x55	1	520x260x300	10

RACKS

In order to secure all the products and solutions above described you have the barpa racks! In different solutions with different configurations, you choose the best cabinets to your system. You can also choose the accessories to improve the cabinet's performance. KVM with IP card is perfect for you to control at distance.

01 CETUS

02 NORMA

03 CRUX

04 PYXIS

05 KVM

06 PDU

07 ACCESSORIES



RACKS SERVER CABINET

SERIES CETUS 1

DESCRIPTION

Cetus 1 cabinet was designed for demanding spaces, like Data Centers. It's available in a range of heights and depths and accommodates a load of up to 1300 kg. The best way to get the most of this cabinet is with barpa accessories, you should get them separately.



RACKS



Applicable Standards

- ANSI/EIA RS-310-D; • IEC 60297-2; • DIN 41494 Part 1 and 7.

• SPECIFICATIONS	
Material	SPCC Cold Rolled Steel; 19" rails: 2.0mm; Casters tray: 2.0mm; Others 1.2mm
Loading Capacity (kg)	1300
Color	Black (RAL7002)
Ventilation (%)	67
Earth Connection	Yes
Product Family	Series Cetus
Packaging	Cetus cabinets are shipped in disassembled packing, saving transportation and storage cost
Design	Side door: split into 2 parts, lockable with square locks; Front and rear door; pluggable front door and rear doors, with external hinges. Casters: Built-in installation design
Frame	Duplex profile frames, could be connected by 8 pieces of screws
Front and Rear Doors	Sheet steel front door perforated + Double sheet steel rear door perforated
Cable Entries on Top and Bottom	Sliding and adjustable cable entries on top and bottom, edges of cable entries are with the design to prevent wires from scratching
Mounting Rails	Installation position of mounting rails could be adjusted quickly.
Included	Vertical cable management. Wheels. Locks

• ORDER INFORMATION - CODE												
Code	U	With (mm)	Length (mm)	Height Mounted (mm)	Dimensions (mm)				Weight (kg)			
					Pack 1	Pack 2	Pack 3	Pack 4	Pack 1	Pack 2	Pack 3	Pack 4
82351240608	24	600	800	1230	1270x830x130	1270x830x130	620x750x130	-	31	31	19	-
82351420608	42	600	800	2030	2070x830x130	2070x830x130	620x750x130	-	48	50	19	-
82351420610	42	600	1000	2030	2070x1030x130	2070x1030x130	620x950x130	-	53	56	21	-
82351420612	42	600	1200	2030	2070x1230x130	2070x1230x130	620x1150x130	-	58	61	23	-
82351420808	42	800	800	2030	2070x890x130	2070x890x130	900x810x130	1840x200x130	50	52	30	9
82351420810	42	800	1000	2030	2070x1030x130	2070x1030x130	900x1010x130	1840x200x130	55	57	34	9
82351420812	42	800	1200	2030	2070x1230x130	2070x1230x130	900x1210x130	1840x200x130	60	62	38	9
82351470608	47	600	800	2252	2270x830x130	2270x830x130	620x750x130	-	56	58	18	-
82351470610	47	600	1000	2252	2270x1030x130	2270x1030x130	620x950x130	-	61	64	21	-
82351470612	47	600	1200	2252	2270x1230x130	2270x1230x130	620x1150x130	-	66	69	22	-
82351470808	47	800	800	2252	2270x890x130	2270x890x130	820x750x130	2110x200x130	58	60	26	10
82351470810	47	800	1000	2252	2270x1030x130	2270x1030x130	820x1010x130	2110x200x130	63	65	30	10
82351470812	47	800	1200	2252	2270x1230x130	2270x1230x130	820x1210x130	2110x200x130	68	70	34	10

RACKS

NETWORK CABINET

SERIES NORMA



DESCRIPTION

Norma cabinet was designed for Networking Rooms. It's available in a range of heights and depths and accommodates a load of up to 800 kg. Three door configurations are available: Norma 1, Norma 2 and Norma 3. The best way to get the most of this cabinet is with barpa accessories, you should get them separately.



Applicable Standards

- ANSI/EIA RS-310-D; • IEC 60297-2; • DIN 41494 Part 1 and 7.

• SPECIFICATIONS

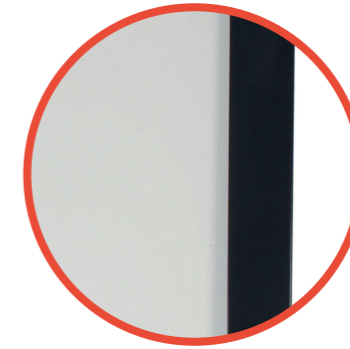
Material	SPCC Cold Rolled Steel; 19" rails: 2.0mm; Casters tray: 2.0mm; Others 1.2mm
Loading Capacity (kg)	800
Color	Black (RAL9004)
Earth connection	Yes
Included	Vertical cable management. Wheels. Locks

• FEATURES

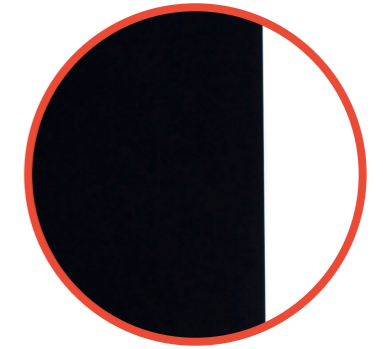
Elegant design with accurate dimension and craftsmanship;
Adjustable feet and heavy duty castors are available simultaneously;
Cable entry on the top cover and bottom panel with adjustable sizes;
Removable side panels for easy maintenance.

RACKS

NORMA 1



FRONT DOOR



REAR DOOR

• ORDER INFORMATION - CODE

Code	U	With (mm)	Length (mm)	Height Mounted (mm)	Dimensions (mm)				Weight (kg)			
					Pack 1	Pack 2	Pack 3	Pack 4	Pack 1	Pack 2	Pack 3	Pack 4
82341115606	15	600	600	870	800x630x240	640x660x110	760x650x120	-	14	16	18	-
82341115608		600	800	870	800x630x240	640x860x110	760x650x120	-	14	20	20	-
82341120606	20	600	600	1092	1020x630x240	640x660x110	1000x650x120	-	17	16	23	-
82341120608		600	800	1092	1020x630x240	640x860x110	1000x650x120	-	17	20	26	-
82341124606	24	600	600	1270	1200x630x240	640x660x110	1160x650x120	-	19	16	27	-
82341124608		600	800	1270	1200x630x240	640x860x110	1160x650x120	-	19	20	30	-
82341129606	29	600	600	1492	1420x630x240	640x660x110	1390x650x120	-	22	16	32	-
82341129608		600	800	1492	1420x630x240	640x860x110	1390x650x120	-	22	20	36	-
82341133606	33	600	600	1670	1600x630x240	640x660x110	1580x650x120	-	24	16	36	-
82341133608		600	800	1670	1600x630x240	640x860x110	1580x650x120	-	24	20	42	-
82341138606	38	600	600	1892	1820x630x240	640x660x110	1780x650x120	-	27	16	41	-
82341138608		600	800	1892	1820x630x240	640x860x110	1780x650x120	-	27	21	48	-
82341138610		600	1000	1892	1820x630x240	640x1060x110	1790x780x120	-	27	24	49	-
82341138806		800	600	1892	1820x830x240	840x660x130	1770x850x120	1660x200x130	29	24	50	8
82341138808	42	800	800	1892	1820x830x240	840x860x130	1770x850x120	1660x200x130	29	30	56	8
82341138810		800	1000	1892	1820x830x240	840x1060x130	1770x850x120	1660x200x130	29	35	62	8
82341142606		600	600	2070	2000x630x240	640x660x110	1960x650x120	-	30	16	45	-
82341142608		600	800	2070	2000x630x240	640x860x110	1960x650x120	-	30	21	52	-
82341142610	47	600	1000	2070	2000x630x240	640x1060x110	1960x790x120	-	30	24	60	-
82341142806		800	600	2070	2000x830x240	840x660x130	1960x850x120	1840x200x130	32	24	54	9
82341142808		800	800	2070	2000x830x240	840x860x130	1960x850x120	1840x200x130	32	30	62	9
82341142810		800	1000	2070	2000x830x240	840x1060x130	1960x850x120	1840x200x130	32	35	68	9
82341147606	51	600	600	2292	2220x630x240	640x660x110	2190x650x120	-	33	16	50	-
82341147608		600	800	2292	2220x630x240	640x860x110	2190x650x120	-	33	21	58	-
82341147610		600	1000	2292	2220x630x240	640x1060x110	2190x790x120	-	33	24	66	-
82341147806		800	600	2292	2220x830x240	840x660x130	2190x790x110	2060x200x130	34	24	55	11
82341147808	55	800	800	2292	2220x830x240	840x860x130	2160x790x110	2060x200x130	34	30	68	11
82341147810		800	1000	2292	2220x830x240	840x1060x130	2160x850x110	2060x200x130	34	35	74	11

NOTE: 2 Unit Pack 5 additional (Lock). Dimensions: 180x50x48 mm; Weight: 0.48 kg.

RACKS WALL CABINET

SERIES CRUX 1



DESCRIPTION

Crux 1 is the wall cabinet of the barpa range of cabinets. It's available in a range of heights and depths and accommodates a load of up to 60 kg. The best way to get the most of this cabinet is with barpa accessories, you should get them separately.



Applicable Standards

• ANSI/EIA RS-310-D; • IEC 60297-2; • DIN 41494 Part 1 and 7.

• ORDER INFORMATION - CODE						
Code	U	Width (mm)	Length (mm)	Height Mounted (mm)	Dimensions (mm)	
					Pack 1	Weight (kg)
82321060604	6	570	450	370	420x620x230	17
82321060606					570x620x250	20
82321090604	9	570	450	500	560x620x210	20
82321090606					570x620x230	23
82321120604	12	570	450	635	690x620x190	24
82321120606					690x630x180	27
82321150604	15	570	450	770	820x620x180	28
82321150606					840x610x180	31
82321180604	18	570	450	900	960x620x180	31
82321180606					950x620x180	41
82321220604	22	570	450	1080	1130x620x180	36
82321220606					1140x620x180	41

RACKS WALL CABINET

SERIES CRUX 2



DESCRIPTION

Crux 2 cabinet is the wall mount bracket of the barpa range of cabinets. It's available in a range of heights and depths. Perfect for versatile solutions as small networks, allowing to save space.



Applicable Standards

• ANSI/EIA RS-310-D; • IEC 60297-2; • DIN 41494 Part 1 and 7.

• ORDER INFORMATION						
Code	Description	U	Quantity (un)	Width (mm)	Dimensions (mm)	
					Pack 1	Weight (kg)
82311020600	Crux 2 2U	2	1	6" - 152.4mm	540x120x190	2
82311030600	Crux 2 3U	3			540x160x190	2
82311040600	Crux 2 4U	4			540x210x190	2
82311060000	Cover 6"	-	2	12" - 304.8mm	540x30x190	2
82311041200	Crux 2 4U	4	1		510x200x320	3
82311071200	Crux 2 7U	7			510x330x320	5
82311120000	Cover 12"	-	2		510x200x320	3

RACKS WALL CABINET

SERIES CRUX 3



DESCRIPTION

Crux 3 cabinet is one 10" Wall cabinet of the barpa range of cabinets. The best way to get the most of this cabinet is with barpa accessories, you should get them separately. Perfect for versatile solutions as small networks.



Applicable Standards

• ANSI/EIA RS-310-D; • IEC 60297-2; • DIN 41494 Part 1 and 7.

• ORDER INFORMATION

Code	Description	U	Quantity (un)	Width (mm)	Dimensions (mm)		Weight (kg)	
					Pack 1	Pack 1	Pack 1	Pack 1
82361080000	Crux 3	8	1	441mm	360x360x470		8.5	

RACKS OPEN RACK

SERIES PYXIS 1



DESCRIPTION

barpa Pyxis 1 cabinet was designed for network rooms with low ventilation. It's available in a range of heights and accommodates a load of up to 250 kg. The best way to get the most of this cabinet is with barpa accessories, you should get them separately.



Applicable Standards

• ANSI/EIA RS-310-D; • IEC 60297-2; • DIN 41494 Part 1 and 7.

• SPECIFICATIONS

Material	SPCC Cold Rolled Steel; Column: 1.5mm. Others 2.0mm
Loading Capacity (kg)	250
Color	Black (RAL9004)
Ventilation (%)	100
Product Family	Series Pyxis

• ORDER INFORMATION

Code	U	Dimensions (mm)		Weight (kg)	
		Pack 1	Pack1	Pack1	Pack1
82331290606	29	1420x260x140		30	
82331330606	33	1600x260x140		32	
82331380606	38	1820x260x140		35	
82331420606	42	2000x260x140		36	
82331470606	47	2220x260x140		40	

RACKS KVM

SWITCH VGA 17" LCD



DESCRIPTION

KVM switch is a control unit allowing access to multiple computers from a single console. The control platform has integrated a single port KVM switch, monitor, keyboard and mouse and is designed based on 1 rack unit height. This product supports multiple operating systems, such as Windows, Linux, Mac and Sun.



Applicable Standards

• EN 55022; • EN 55024; • EN 61000-3-2; • EN 61000-3-3.

• FEATURES

- Control platform with LCD, keyboard, mouse and port VGA KVM switch;
- 1U height, suitable for 19" standard cabinet installation and metal structure;
- Ultra thin keyboard with keypad;
- One control platform can control 1pcs computer by direct connection;
- Compatible with USB/PS.2 standard interface;
- Support VGA, SVGA, XGA video input;
- According with DDC, DDC2, DDC2B standard and VESA standard;
- Supports multiple operating systems: WIN95/98/98SE/ME/200X/XP/WIN7/ NT, UNIX, LINUX.

• ORDER INFORMATION

Code	Description	Unit Weight (kg)	Unit Dimensions (mm)	Quantity (un)
82371117010	KVM Switch VGA 17" LCD 1 Port	21	805x695x190	1
82371117080	KVM Switch VGA 17" LCD 8 Ports	22.5	805x695x190	1
82372010000	IP Card for KVM Switch	0.07	110x68x22	1

RACKS POWER DISTRIBUTION UNIT



DESCRIPTION

The barpa Power Distribution Unit is suitable for racks and/or networking equipment. It's designed to supply electric power in a very demanding and challenging environment as in a data center. In our range we have horizontal (19" 1U) and vertical. All with aluminum frame.



Applicable Standards

• IEC/EN 60884 - 1.

• ORDER INFORMATION

Code	With	U	Type	N° Ways	Socket	Control System	Plug
82381061000	19"	1	Horizontal	6	Schuko	Switch	Schuko
82381081000	19"	1	Horizontal	8	Schuko	Switch	Schuko
82381081040	19"	1	Horizontal	8	Schuko	-	Schuko
82381061300	19"	1	Horizontal	6	French	Switch	Schuko
82381061400	19"	1	Horizontal	6	Italian	Switch	Schuko
82381061200	19"	1	Horizontal	6	UK	Switch	Schuko
82381061100	19"	1	Horizontal	6	US	Switch	Schuko
82381061020	19"	1	Horizontal	6	Schuko	Double Air Switch	Schuko
NEW 82381091700	19"	1	Horizontal	6 Schuko + 3IEC		Switch	Schuko
NEW 82381091740	19"	1	Horizontal	6 Schuko + 3IEC		-	Schuko
82381122000	-	-	Vertical	12	Schuko	Switch	Schuko
82381162000	-	-	Vertical	16	Schuko	Switch	Schuko
82384031000	10"	1	Horizontal	3	Schuko	Switch	Schuko
NEW 82381121505	19"	1	Horizontal	12	IEC C13	Switch	IEC C14

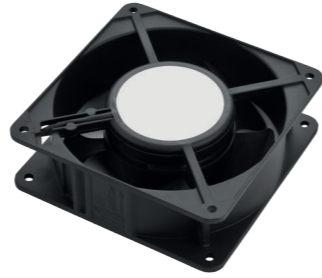
RACKS ACCESSORIES

COOLING FAN

This barpa Cooling Fan is suitable for all range of cabinets. Perfect to adjust inner temperature of the cabinet.

• ORDER INFORMATION

Code	Description	Unit Weight (kg)	Carton	
			Size (mm)	Quantity (un)
82390501010	Cooling Fan	0.486	530x305x310	40



1U FAN UNIT

barpa 1U Fan Unit has 19" standard installation, making it perfect for barpa cabinets. Suitable to use in the middle or bottom of the cabinet, good to decrease the inner temperature.

• ORDER INFORMATION

Code	Fan (un)	Type	Unit Weight (kg)	Inner Box		Carton	
				Size (mm)	Quantity (un)	Size (mm)	Quantity (un)
82390506210	2	UK	3.5	510x205x65	1	650x530x180	10
82390506110	2	German	3.5				
82390507210	3	UK	4.38				
82390507110	3	German	4.38				
82390508210	4	UK	5.25				
82390508110	4	German	5.25				



FAN UNIT WITH ANALOGIC THERMOSTAT

barpa 1U Fan Unit has 19" standard installation, making it perfect for barpa cabinets. Suitable to use in the middle or bottom of the cabinet, good to decrease the inner temperature.

• ORDER INFORMATION

Code	Fan (un)	Type	Unit Weight (kg)	Inner Box		Carton	
				Size (mm)	Quantity (un)	Size (mm)	Quantity (un)
82390504210	2	UK	2.4	395x295x75	1	645x405x305	10
82390504110	2	German	2.4				
82390505210	4	UK	3.2				
82390505110	4	German	3.2				



RACKS ACCESSORIES

FAN UNIT

barpa Fan Unit has 19" standard installation, only appropriate for barpa cabinets. Enables ventilation and easy operation.

• ORDER INFORMATION

Code	Fan (un)	Type	Unit Weight (kg)	Inner Box		Carton	
				Size (mm)	Quantity (un)	Size (mm)	Quantity (un)
82390502210	2	UK	2.5	395x295x65	1	645x405x305	10
82390502110	2	Schuko	2.5				
82390503210	4	UK	3.5				
82390503110	4	Schuko	3.5				



FAN UNIT FOR CRUX 1

• ORDER INFORMATION

Code	Thermostat	Unit Weight (kg)	Size (mm)	Quantity (un)	Carton	
					Size (mm)	Quantity (un)
82390509110	No	1.5	360x140x60	1	370x325x305	10
82390510110	Yes	1.8	395x200x60	1	410x410x495	10



DIGITAL TEMPERATURE UNIT

barpa Digital Temperature Unit has 19" standard installation. Helps to control the inner temperature of the cabinet. Easy cabling and operation.

• ORDER INFORMATION

Code	Input Connector	Unit Weight (kg)	Size (mm)	Quantity (un)	Carton	
					Size (mm)	Quantity (un)
82390601210	UK (BS1363)	1.95	510x205x65	1	650x530x180	10
82390601110	German (DIN49441)					
82390601310	US (NEMA 5-15P)					



1U - METAL CABLE MANAGEMENT WITH COVER

barpa 1U Metal Cable Management with Cover has 19" standard installation. It helps to have better cable organization in the cabinet.

• ORDER INFORMATION

Code	Unit Weight (kg)	Size (mm)	Quantity (un)	Carton	
				Size (mm)	Quantity (un)
82390201110	0.85	510x65x105	1	570x520x495	50



RACKS ACCESSORIES

1U METAL CABLE MANAGEMENT

barpa 1U Metal Cable Management with 4 rings has 19" standard installation. It helps to have a better cable organization in the cabinet.

• ORDER INFORMATION						
Code	Unit Weight (kg)	Inner Box		Carton		Quantity (un)
		Size (mm)	Quantity (un)	Size (mm)	Quantity (un)	
82390202110	0.61	500x90x560	1	575x520x570	50	



1U PLASTIC CABLE MANAGEMENT

barpa 1U Plastic Cable Management with 5 rings has 19" or 10" standard installation. It helps to have a better cable organization in the cabinet.

• ORDER INFORMATION						
Code	Unit Weight (kg)	Size (mm)	Inner Box		Carton	
			Quantity (un)	Size (mm)	Quantity (un)	
82390203120	0.51	19"	500x90x560	1	575x520x570	50
82390805120	0.5	10"	500x90x560	1	580x520x570	50



1U CABLE MANAGEMENT WITH BRUSH

barpa 1U Cable Management with Brush has 19" standard installation. It helps to have a better cable organization in the cabinet.

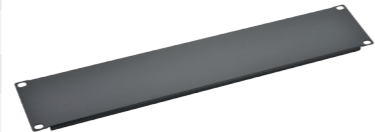
• ORDER INFORMATION						
Code	Unit Weight (kg)	Inner Box		Carton		Quantity (un)
		Size (mm)	Quantity (un)	Size (mm)	Quantity (un)	
82390204100	0.3	510x70x40	1	520x230x300	50	



BLANK PANEL

barpa Blank Panels are part of the energy-saving airflow management solutions of data centers. It can minimize airflow in cabinet while providing good appearance.

• ORDER INFORMATION								
Code	U	Width	Unit Size (mm)	Unit Weight (kg)	Inner Box		Carton	
					Size (mm)	Quantity (un)	Size (mm)	Quantity (un)
82390241100	1		482x44	0.5	510x65x30	2	520x300x230	100
82390241200	2	19"	482x88	0.9	510x113x30	2		60
82390241400	4		482x177	0.85	510x195x30	2		30
82390251100	1	10"	254x44	0.28	510x65x30	1		50



RACKS ACCESSORIES

SHELF WITHOUT HOLES

barpa 2U Shelves Without Holes have 19" standard installation and belongs to the range of barpa shelves. It has different purposes depending on your needs.

• ORDER INFORMATION						
Code	Depth (mm)	Unit Weight (kg)	Inner Box		Carton	
			Size (mm)	Quantity (un)	Size (mm)	Quantity (un)
82390111201	254	1.5	530x130x275	2	680x545x295	10
82390111202*	406.4	2.3	530x130x425	2	680x545x445	10

*Only for Norma and Cetus



SHELF WITH HOLES

barpa 2U Shelves With Holes have 19" standard installation and belongs to the range of barpa shelves. It has different purposes depending on your needs.

• ORDER INFORMATION						
Code	Depth (mm)	Unit Weight (kg)	Inner Box		Carton	
			Size (mm)	Quantity (un)	Size (mm)	Quantity (un)
82390171204	406	2	540x110x440	1	560x570x460	5



FIXED SHELF

barpa Fixed Shelves have 19" standard installation and it's only appropriate for barpa cabinets. It has different purposes depending on your needs.

• ORDER INFORMATION						
Code	Cabinet Use	Depth (mm)	Inner Box		Carton	
			Size (mm)	Quantity (un)	Size (mm)	Quantity (un)
82390141106	Crux 1 450mm	300	510x55x315	2	535x280x340	10
82390141108	Crux 1 600mm	450	510x55x465	2	535x280x490	10
82390131107	Cetus, Pyxis and Norma 600mm	350	510x55x365	2	535x280x390	10
82390131109	Norma 800mm	550	510x55x565	2	535x280x590	10
82390131111	Norma 1000mm	720	510x55x735	2	535x280x760	10
82390121109	Cetus 800mm	500	510x50x520	2	535x255x540	10
82390121111	Cetus 1000m	700	510x50x720	2	535x225x740	10
82390121112	Cetus 1200m	900	510x50x920	2	535x255x940	10



RACKS ACCESSORIES

SLIDING SHELF

barpa Sliding Shelves have 19" standard installation. It has different purposes depending on your needs.

• ORDER INFORMATION						
Code	Cabinet Use	Depth (mm)	Inner Box		Carton	
			Size (mm)	Quantity (un)	Size (mm)	Quantity (un)
82390151107	Cetus 1 and Norma 600-800mm Cabinet	350	560x70x390	1	630x570x410	10
82390151109	Cetus 1 and Norma 1000mm Cabinet	550	560x70x630	1	630x570x650	10
82390151112	Cetus 1 and Norma 1200mm Cabinet	550	560x70x820	1	630x570x840	10



LOCK

barpa Lock has a comfort handle and it's only appropriate for barpa cabinets. It helps securing your cabinet.

• ORDER INFORMATION					
Code	Unit Weight (kg)	Inner Box		Carton	
		Size (mm)	Quantity (un)	Size (mm)	Quantity (un)
82390703100	0.48	180x50x48	1	570x230x170	36



PASSWORD LOCK

barpa Password Lock is a special lock for the barpa cabinets. You can open your cabinet with lock or password.

• ORDER INFORMATION					
Code	Unit Weight (kg)	Inner Box		Carton	
		Size (mm)	Quantity (un)	Size (mm)	Quantity (un)
82390704100	0.64	180x50x48	1	570x230x170	36



RACKS ACCESSORIES

SIDE AND FRONT DOOR LOCK

barpa Side and Front Door Locks are only appropriate for barpa cabinets. It helps securing your cabinet.

• ORDER INFORMATION						
Code	Description	Unit Weight (kg)	Inner Box		Carton	
			Size (mm)	Quantity (un)	Size (mm)	Quantity (un)
82390702000	Side Lock	0.094	180x50x48	2	570x230x170	72
82390701000	Front Door Lock					



CASTERS

barpa Casters are appropriate for barpa cabinets. It helps moving your cabinet.

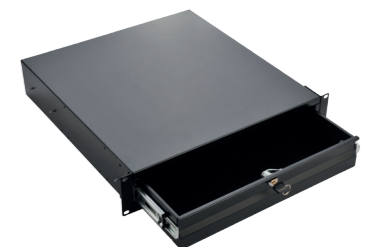
• ORDER INFORMATION					
Code	Description	Inner Box		Carton	
		Size (mm)	Quantity (un)	Size (mm)	Quantity (un)
82390801010	Caster 2"	180x160x70	4	360x360x130	32
82390801020	Caster 2.5"				
82390801030	Caster 3"				
82390802010	Caster with brake 2"				
82390802020	Caster with brake 2.5"				
82390802030	Caster with brake 3"				



DRAWER

barpa Drawers are appropriate for barpa cabinets. You can keep in your cabinet whatever you want in a secure way. Sliding shelf can extend up to 450mm.

• ORDER INFORMATION				
Code	Description	Unit Weight (kg)	Inner Box	
			Size (mm)	Quantity (un)
82390301100	Drawer 2U	8.25	560x540x150	1
82390302100	Drawer 3U	9.7	560x540x195	1



RACKS ACCESSORIES

PLINTH

barpa Plinths are only appropriate for barpa cabinets. It helps your cabinet to have more stability and better looking.

• ORDER INFORMATION

Code	Description	Unit Weight (kg)	Inner Box	
			Size (mm)	Quantity (un)
82391001166	Plinth for Norma 600x600mm	5.5	620x620x120	1
82391001168	Plinth for Norma 600x800mm	6.0	820x620x120	1
82391001161	Plinth for Norma 600x1000m	6.5	1020x620x120	1
82391001188	Plinth for Norma 800x800mm	7.0	620x820x120	1
82391001181	Plinth for Norma 800x1000mm	7.5	820x1020x120	1
82391002166	Plinth for Cetus 600x600mm	6.0	620x620x120	1
82391002168	Plinth for Cetus 600x800mm	6.5	620x820x120	1
82391002161	Plinth for Cetus 600x1000mm	7.0	620x1020x120	1
82391002162	Plinth for Cetus 600x1200mm	7.5	620x1220x120	1
82391002188	Plinth for Cetus 800x800mm	8.0	820x820x120	1
82391002181	Plinth for Cetus 800x1000mm	8.5	820x1020x120	1
82391002182	Plinth for Cetus 800x1200mm	9.0	820x1220x120	1



SCREWS AND NUTS

barpa Screws and Nuts are appropriate for barpa cabinets. Helps you mount the cabinets and accessories.

• ORDER INFORMATION

Code	Description	Unit Weight (kg)	Plastic Bag		Carton	
			Size (mm)	Quantity (un)	Size (mm)	Quantity (un)
82391101000	10-32 Screws With Cushion	0.16	100x100	50	340x340x120	2500
82391102000	Screws & Nets M6 Phillips	0.39				
82391103000	Cushion M6	0.01				



RACKS ACCESSORIES

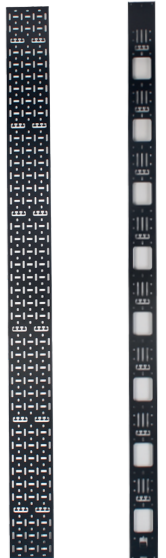
PDU - CABLE MANAGEMENT PANEL

barpa PDU Cable Management Panels are appropriate for barpa cabinets. It's main use to install vertical PDU, but you can use for other purposes.

• ORDER INFORMATION

Code	Description	Unit Weight (kg)	Inner Box	
			Size (mm)	Quantity (un)
82391201242	For Cetus 42U	1.75	1955x110x12	2
82391201247	For Cetus 47U	1.95	2175x160x12	
82391201133	For Norma 33U	1.25	1375x150x12	
82391201138	For Norma 38U	1.45	1600x150x12	
82391201142	For Norma 42U	1.6	1775x150x12	
82391201147	For Norma 47U	1.85	2000x150x12	

FOR NORMA



CONNECTION KIT

The Couplers were designed specifically for the barpa racks. They have the function of connecting the racks for better safety.

• ORDER INFORMATION

Code	Description	Inner Box		Carton	
		Size (mm)	Quantity (un)	Size (mm)	Quantity (un)
82391104002	For Cetus	180x50x48	4	570x230x180	144
82391104001	For Norma				

FOR CETUS



VERTICAL CABLE MANAGEMENT

The Organizers were designed specifically for the barpa racks. Their function is for better management of the cables.

• ORDER INFORMATION

Code	Description	Unit Weight (kg)	Carton	
			Size (mm)	Quantity (un)
82391313810	For Norma 38U	2.3	1790x180x400	1
82391314210	For Norma 42U	2.5	1970x180x400	1
82391314710	For Norma 47U	2.8	2190x180x400	1
82391324210	For Cetus 42U	3.5	1830x120x100	1
82391324710	For Cetus 47U	4.5	2090x120x100	1



RACKS ACCESORIOS

BRUSH PANEL FOR NORMA CABINET

barpa brush panel is suitable for a better work in cabinet.

• ORDER INFORMATION

Code	Unit Weight (kg)	Inner Box		Carton	
		Size (mm)	Quantity (un)	Size (mm)	Quantity (un)
82390205100	0.6	510x113x30	2	520x300x230	60



ADJUSTABLE FEET

This barpa Adjustable Feet is suitable for all range of floor cabinets. The static load capacity is 250kg per unit.

• ORDER INFORMATION

Code	Unit Weight (kg)	Plastic Bag		Carton	
		Size (mm)	Quantity (un)	Size (mm)	Quantity (un)
82390901100	0.13	150x150	4	340x340x140	120



COPYRIGHTS

barpa is the sole owner of all copyright and property rights of this file and accompanying manuals and other documents. No reproduction or use the objects, graphics and pictures is allowed without our express consent.

CONTACTS

info@barpa.eu
www.barpa.eu

barpa ® All Rights Reserved.



